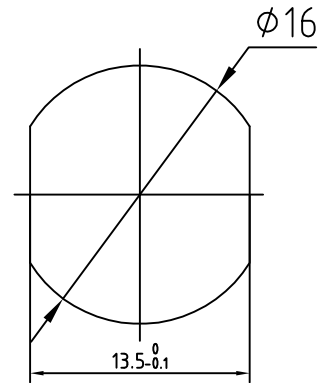


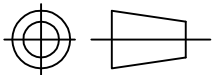
## 1 Electrical

- 1.1 Impedance:  $50\Omega$
- 1.2 Frequency: DC-3GHz
- 1.3 VSWR  $\leq 1.3$
- 1.4 Insulation resistance:  $\geq 5000M\Omega$
- 1.5 Dielectric strength: 1500V
- 1.6 Contact resistance
  - Center contact  $\leq 1M\Omega$
  - Outer contact  $\leq 0.2M\Omega$



## 2 Materials & Finish

- 2.1 Inner Contact: Bronze, gold plated
- 2.2 Outer Contact: Brass, Nickel plated
- 2.3 Insulators: PTFE



Scale

1:1

N-KY3CY

N female B/H Conn  
for RG316 (CPS)

UNLESS OTHERWISE SPECIFIED  
DIMENSIONS ARE mm, TOLERANCES ARE:  
FRACTIONS DECIMALS ANGLES

.X $\pm$ .15  $\pm 1^\circ$   
.XX $\pm$ .05  
.XXX $\pm$

No		Name	Date
1	Designed	Michael	14-Mar-09
2	Checked	Jason	14-Mar-09
3	Approved	Teresa	14-Mar-09

Xi'an T-RELY ELECTRONICS CO., LTD.