

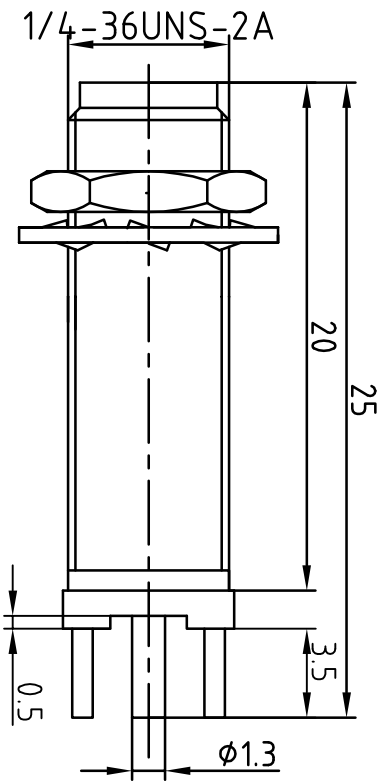
This document contains proprietary information and such information may not be disclosed to others for any purposes, not used for sales/marketing/procurement purposes without written permission

REV	DESCRIPTION OF REVISION	ECN NO.	BY	DATE	APPROVED
A	Initial Release		T.HoJyun	12/7/08	12/7/08

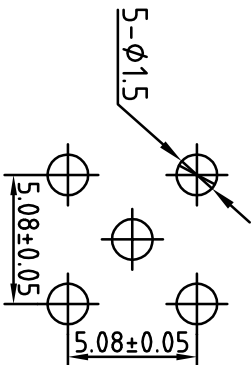
- 1 Electrical
 - 1.1 Impedence 50Ω
 - 1.2 Frequency DC-8GHz
 - 1.2 Dielectric withstanding voltage 1000V(volts RMS)
 - 1.3 Center contact resistance ≤ 3MΩ
 - 1.4 Outer contact resistance ≤ 2MΩ
 - 1.5 Insulation resistance: ≥ 5000MΩ
 - 1.6 VSWR 1.3

- 2 Environmental&Mechanical
 - 2.1 Temperature range -45°C~85°C
 - 2.2 RoHs Compliant
 - 2.3 Durability >500 cycles

- 3 Materials&plating
 - 3.1 Body: Brass, Gold plated
 - 3.2 Insulator: Teflon
 - 3.3 Contact Pin: Beryllium Copper Gold plated




Recommended PCB Layout



Notes:

1. ALL SPECIFICATIONS ARE SUBJECT TO CHANGE NOTICE AT ANY TIME
2. CUSTOMER OUTLINE DRAWING FOR REFERENCE ONLY

DRAWN: T.HoJyun 12/07/08	TITLE: RF Coaxial Connector	 www.tti-rf.com
ENGINEER: C.Too 12/07/08	SMA Female B/H Conn. Terminal	
APPROVED: W.Qiang 12/07/08	PART NO: SMA-KYHD9	SIZE: A4
TOLERANCES UNLESS OTHERWISE SPECIFIED		SCALE: N/A
X 0.25		SHEET: 1/1
XX 0.10		REV: A
ANGLES 3°		

DIMENSION IN MILLIMETERS (mm)