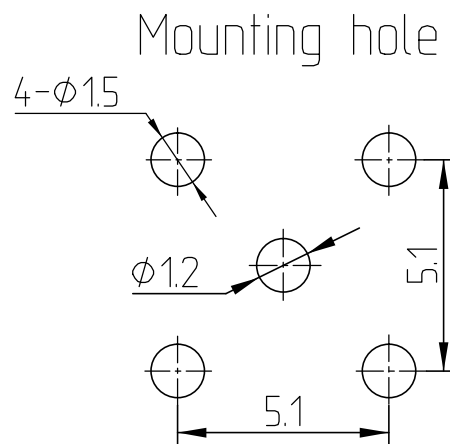
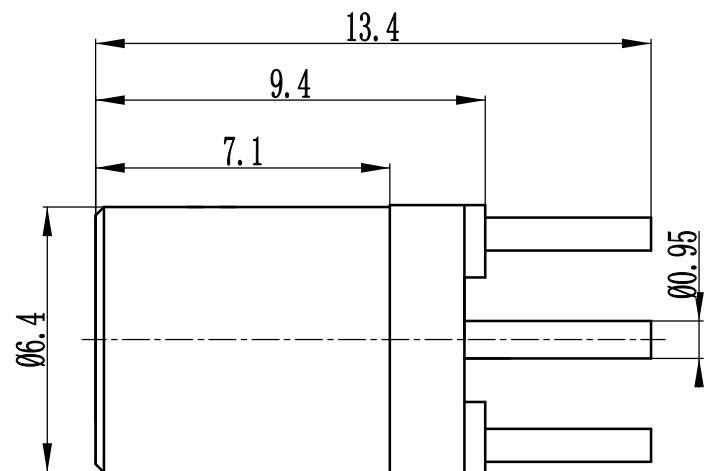


This document contains proprietary information and such information may not be disclosed to others for any purposes,
not used for sales/marketing/procurement purposes without written permission

REV	DESCRIPTION OF REVISION	ECN NO.	BY	DATE	APPROVED
A	Initial Release	—	T. Shihua	21/11/17	21/11/17



1 Electrical

1.1 Impedance:	50 Ω
1.2 Frequency:	0~4GHz
1.3 Working voltage:	$\leq 35V$
1.4 Insulation resistance:	$\geq 1000M\Omega$
1.5 Dielectric strength:	750V
1.6 VSWR	1.30:1

2 Environmental&Mechanical

2.1 Temperature range	-45℃~85℃
2.2 RoHs Compliant	
2.3 Durability	500 cycles

3 Materials&plating

3.1 Inner Contact:	Beryllium copper, gold plating
3.1 Outer Contact:	brass, gold plated
3.3 Insulators:	Teflon

Notes:

1. ALL SPECIFICATIONS ARE SUBJECT TO CHANGE NOTICE AT ANY TIME
2. CUSTOMER OUTLINE DRAWING FOR REFERENCE ONLY

DRAWN: T. Shihua 21/11/17
ENGINEER: C. Tao 21/11/17
APPROVED: W. Qiang 21/11/17
TOLERANCES UNLESS OTHERWISE SPECIFIED X ± 0.50 .X ± 0.20 .XX ± 0.10 ANGLES $\pm 1^\circ$

TITLE:

RF Coaxial Connector

SMB Female Straight connector
For PCB

PART NO: SMB-KHD6



www.trl-rf.com



DIMENSION IN MILLIMETERS (mm)

SIZE: A4	SCALE: 1:1	SHEET: 1/1	REV: A
----------	------------	------------	--------