

1

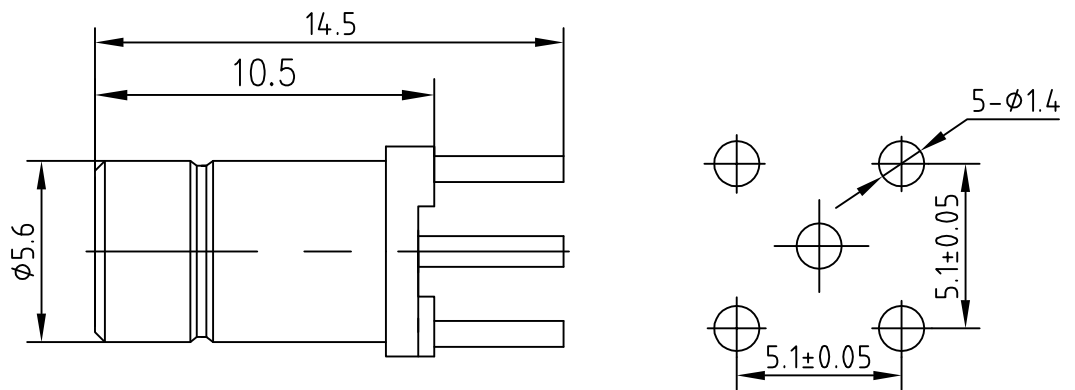
2

3

4

A

A



B

B

Electrical

1. Impedance: 75Ω
2. Frequency: $0\sim 2\text{GHz}$
3. Working voltage: $\leq 335\text{V}$
4. Insulation resistance: $\geq 1000\text{M}\Omega$
5. Dielectric strength: 1000V
6. Center contact resistance $\leq 6\text{m}\Omega$
7. Outer contact resistance $\leq 1\text{m}\Omega$

C

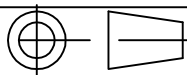
C

Material&Finish

1. Inner Contact: Brass, gold plated
2. Outer Contact: brass. gold plated
3. Insulators: Teflon

D

D



Scale

1:1

Name

Date

Designed

Tomson

16-May-12

Checked

Jason

16-May-12

Approved

Teresa

16-May-12

SMB-75JHD

RF Coaxial Connector

UNLESS OTHERWISE SPECIFIED
DIMENSIONS ARE mm, TOLERANCES ARE:
FRACTIONS DECIMALS ANGLES

.X± .15 ±1°

.XX± .05

.XXX±

Danyang Teruilai Electronics Co., Ltd.