

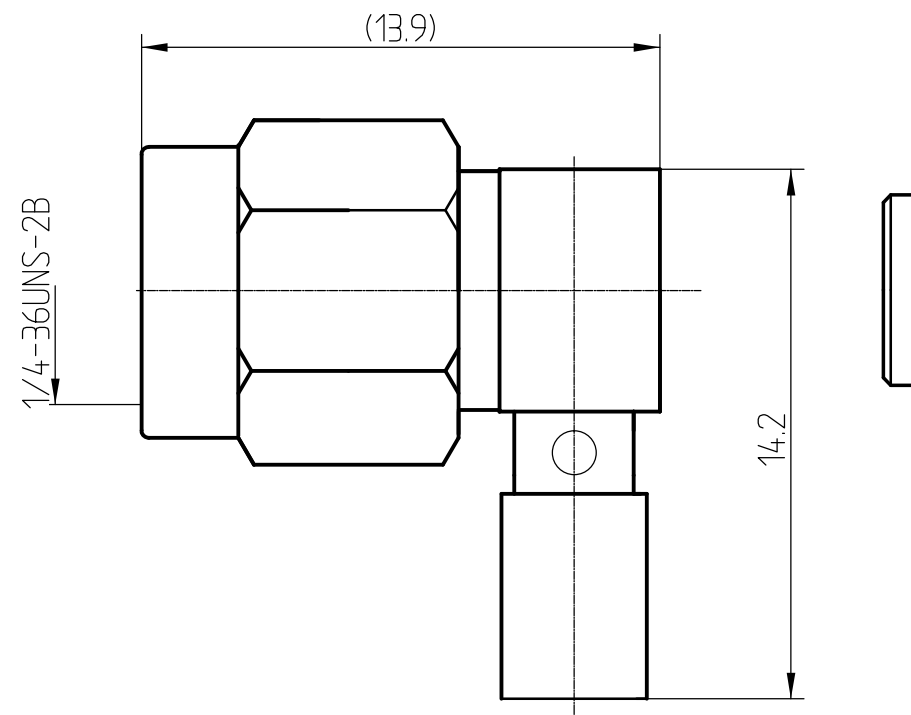
This document contains proprietary information and such information may not be disclosed to others for any purposes, not used for sales/marketing/procurement purposes without written permission

REV	DESCRIPTION OF REVISION	ECN NO.	BY	DATE	APPROVED
A	Initial Release	—	T. Shihua	12/7/13	12/7/13

1 Electrical
 1.1 Impedance 50 Ω
 1.2 Frequency 0~18GHz
 1.3 VSWR 1.30:1

2 Environmental&Mechanical
 2.1 Temperature range -45℃~125℃
 2.2 RoHs Compliant
 2.3 Durability >500 cycles

3 Materials&plating
 3.1 Body: Brass, Gold Plated
 3.2 Insulator: Teflon
 3.3 Contact Pin: Brass,, Gold Plated
 3.4 Nut : Stainless Steel Passivated



Notes:
 1. ALL SPECIFICATIONS ARE SUBJECT TO CHANGE NOTICE AT ANY TIME
 2. CUSTOMER OUTLINE DRAWING FOR REFERENCE ONLY

DRAWN: T. Shihua 12/07/13
ENGINEER: C. Tao 12/07/13
APPROVED: W. Qiang 12/07/13
TOLERANCES UNLESS OTHERWISE SPECIFIED X ±0.50 .X ±0.20 .XX ±0.10 ANGLES ±1°

TITLE: RF Coaxial Connector SMA Male R/A Conn. For .086 Cable
PART NO: SMA-JWB2CG

TRL www.teruilai.com

DIMENSION IN MILLIMETERS (mm)

SIZE: A4	SCALE: N/A	SHEET: 1/1	REV: A
-------------	---------------	---------------	-----------