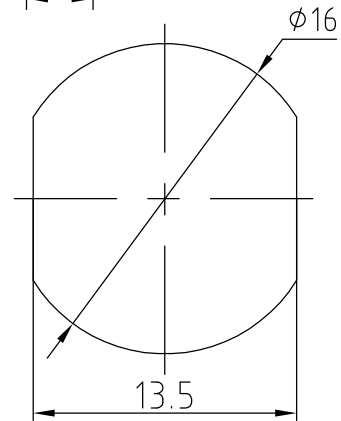


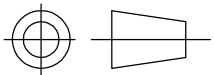
## 1 Electrical

- 1.1 Impedance:  $50\Omega$
- 1.2 Frequency: 0-6GHz
- 1.3 Insulation resistance:  $\geq 5000M\Omega$
- 1.4 Dielectric strength: 1500V
- 1.5 Contact resistance
  - Center contact  $\leq 1M\Omega$
  - Outer contact  $\leq 0.2M\Omega$



## 2 Materials&Finish

- 2.1 Inner Contact: Brass, gold plated
- 2.2 Outer Contact: Brass, Nickel plated
- 2.3 Insulators: PTFE



Scale

1:1

N-KYW3Y

N female B/H R/A Conn.  
for RG316 Cable

UNLESS OTHERWISE SPECIFIED  
DIMENSIONS ARE mm, TOLERANCES ARE:  
FRACTIONS DECIMALS ANGLES  
.X± .15 ±1°  
.XX± .05  
.XXX±

No		Name	Date
1	Designed	Michael	8-Sep-15
2	Checked	Jason	8-Sep-15
3	Approved	Teresa	8-Sep-15

Shenzhen Jac-tech electronics Co.,Ltd