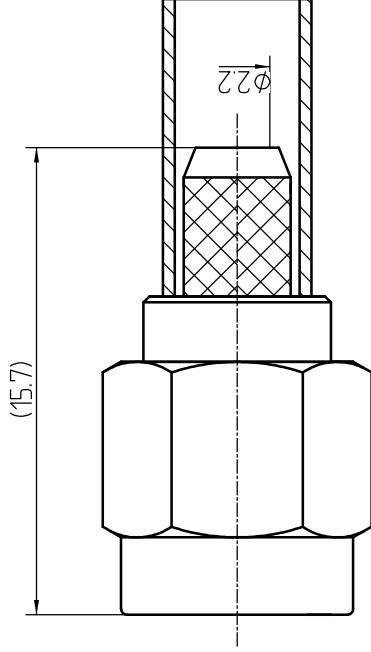


This document contains proprietary information and such information may not be disclosed to others for any purposes, not used for sales/marketing/procurement purposes without written permission

- 1 Electrical
 - 1.1 Impedence: 50 Ω
 - 1.2 Frequency: DC ~6GHz
 - 1.3 Dielectric withstanding voltage: 1000V(walts RMS)
 - 1.4 Center contact resistance: ≤ 3MΩ
 - 1.5 Outer contact resistance: ≤ 2MΩ
 - 1.6 Insulation resistance: ≥5000MΩ
- 2 Environmental&Mechanical
 - 2.1 Temperature range: -40℃~+70℃
 - 2.2 RoHS Compliant
 - 2.3 Durability: >500 cycles
- 3 Materials&plating
 - 3.1 Body: Brass; Gold plated
 - 3.2 Insulator: Teflon
 - 3.3 Contact Pin: Brass, Gold plated
 - 3.4 Nut: Brass,Gold Plated
 - 3.5 Gasket: Silicon Rubber (red color)
 - 3.6 Ferrule: Copper, Nickel plated



REV	DESCRIPTION OF REVISION	ECN NO.	BY	DATE	APPROVED
A	Initial Release		T. Haiyun	23/5/07	23/5/07

Notes:

1. ALL SPECIFICATIONS ARE SUBJECT TO CHANGE NOTICE AT ANY TIME
2. CUSTOMER OUTLINE DRAWING FOR REFERENCE ONLY

DRAWN: T. Haiyun 23/5/07
ENGINEER: C. Tao 23/5/07
APPROVED: W. Qiang 23/5/07
TOLERANCES UNLESS OTHERWISE SPECIFIED
X +0.50
.X +0.20
.XX +0.10
ANGLES *°

TITLE:		RF Coaxial Connector	
SMA Male Str. Conn. for SYV-50-2 Cable		www.teruillai.com	
PART NO: SMA-J2		DIMENSION IN MILLIMETERS (mm)	
SIZE: A4	SCALE: N/A	SHEET: 1/1	REV: A

