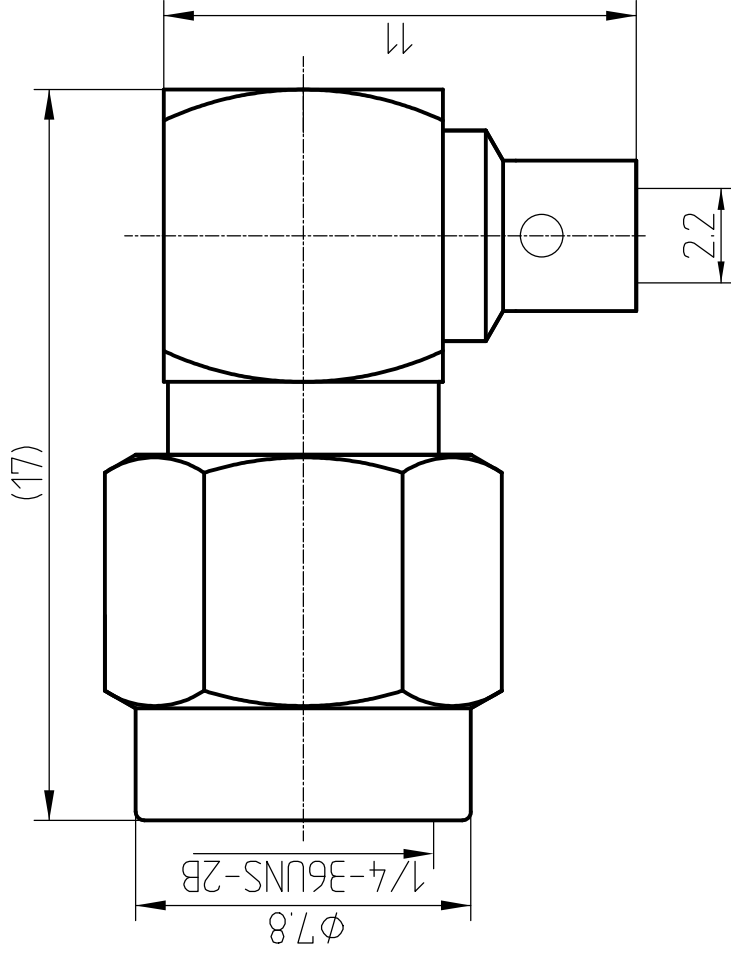


This document contains proprietary information and such information may not be disclosed to others for any purposes, not used for sales/marketing/procurement purposes without written permission

- 1 Electrical
 - 1.1 Impedence 50 Ω
 - 1.2 Frequency DC ~6GHz
 - 1.3 VSWR 1:25:1
- 2 Environmental&Mechanical
 - 2.1 Temperature range -40 $^{\circ}$ c ~+125 $^{\circ}$ c
 - 2.2 RoHS Compliant
 - 2.3 Durability >500 cycles
- 3 Materials&plating
 - 3.1 Body: Brass, Gold Plated
 - 3.2 Insulator: Teflon,
 - 3.3 Contact Pin: Brass, Gold plated
 - 3.4 Nut: Brass, Gold Plated
 - 3.5 Gasket: Silicon Rubber (red color)



Notes:

1. ALL SPECIFICATIONS ARE SUBJECT TO CHANGE NOTICE AT ANY TIME
2. CUSTOMER OUTLINE DRAWING FOR REFERENCE ONLY

REV	DESCRIPTION OF REVISION	ECN NO.	BY	DATE	APPROVED
A	Initial Release		T. Haiyun	23/5/14	23/5/14

DRAWN: T. Haiyun 25/5/14		TITLE: RF Coaxial Connector	
ENGINEER: C. Tao 25/5/14		www.terulal.com	
APPROVED: W. Qiang 25/5/14		DIMENSION IN MILLIMETERS (mm)	
TOLERANCES UNLESS OTHERWISE SPECIFIED		SCALE: N/A	
X	+0.50	A4	SHEET: 1/1
.X	+0.20	REV: A	
.XX	+0.10	PART NO: SMA-JWB2A	
ANGLES	*°	SIZE: A4	