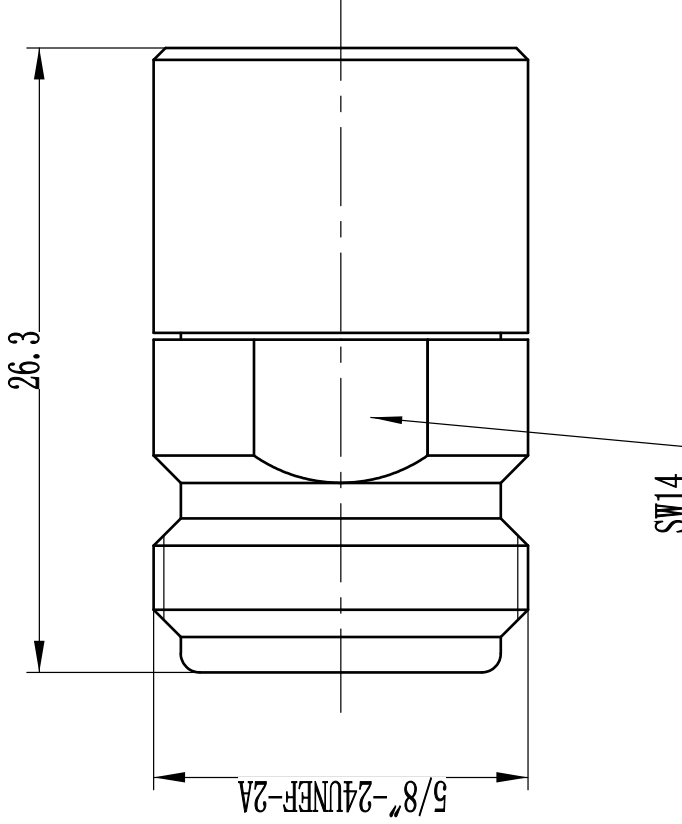


This document contains proprietary information and such information may not be disclosed to others for any purposes, not used for sales/marketing/procurement purposes without written permission

- 1 Electrical
 - 1.1 Impedence 50 Ω
 - 1.2 Frequency DC ~6GHz
 - 1.3 Dielectric withstanding voltage 1000V(volts RMS)
 - 1.4 Center contact resistance $\leq 3M\Omega$
 - 1.5 Outer contact resistance $\leq 2M\Omega$
 - 1.6 Insulation resistance: $\geq 5000M\Omega$
 - 1.7 Power $\leq 2W$
 - 1.8 VSWR 1.25:1
- 2 Environmental & Mechanical
 - 2.1 Temperature range -40 $^{\circ}C$ ~ +125 $^{\circ}C$
 - 2.2 RoHs Compliant
 - 2.3 Durability >500 cycles
- 3 Materials & Plating
 - 3.1 Body: Brass, Nickel plated
 - 3.2 Insulator: Teflon
 - 3.3 Contact Pin: Bronze, gold plated



Notes:

- 1. ALL SPECIFICATIONS ARE SUBJECT TO CHANGE NOTICE AT ANY TIME
- 2. CUSTOMER OUTLINE DRAWING FOR REFERENCE ONLY

REV	DESCRIPTION OF REVISION	BY	DATE	APPROVED
A	Initial Release	T. Haiym	12/1/12	12/1/12

DRAWN: T. Haiym 12/1/12		TITLE: RF TERMINATION	
ENGINEER: C. Two 12/1/12		www.tentul.com	
APPROVED: T. Haiym 12/1/12		DIMENSION IN MILLIMETERS (mm)	
TOLERANCES UNLESS OTHERWISE SPECIFIED			
X	+0.50	SIZE: A4	
.X	+0.20	SCALE: N/A	
.XX	+0.10	SHEET: 1/1	
ANGLES	*°	REV: A	
PART NO: N-50NF-2		N Female Conn. Termination 2 Watts	