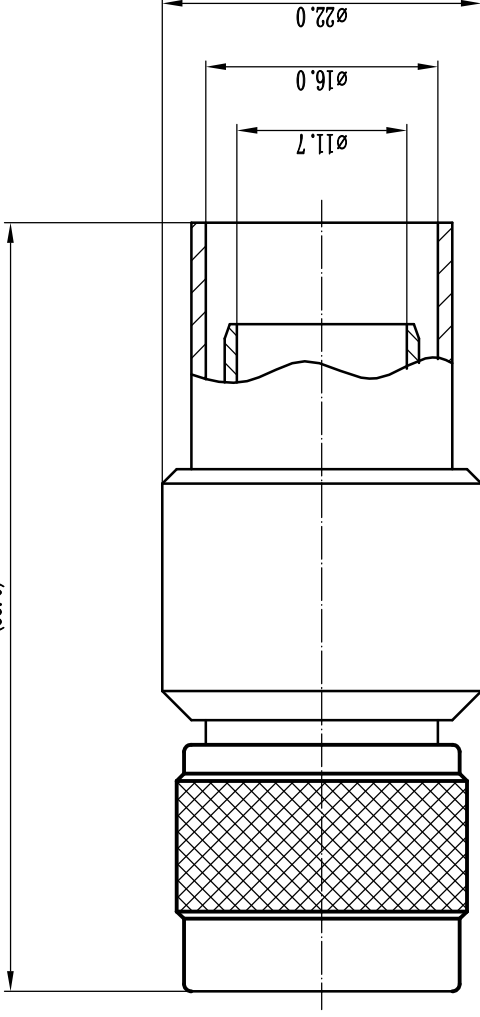


This document contains proprietary information and such information may not be disclosed to others for any purposes, not used for sales/marketing/procurement purposes without written permission

- 1 Electrical
 - 1.1 Impedence 50 Ω
 - 1.2 Frequency DC ~6GHz
 - 1.2 Dielectric withstanding voltage 1500V(volts RMS)
 - 1.3 Working Voltage: 1000V rms
 - 1.5 Insulation resistance: $\geq 5000M\Omega$
- 2 Environmental & Mechanical
 - 2.1 Temperature range -40°C ~85°C
 - 2.2 RoHS Compliant
 - 2.3 Durability >500 cycles
- 3 Materials & plating
 - 3.1 Body: Brass, Nickel plated
 - 3.2 Insulator: Teflon
 - 3.3 Contact Pin: Brass, Gold plated
 - 3.4 Ferrule: Copper, Nickel plated
 - 3.5 Coupling nut: Brass, Nickel plated

(53.0)



Notes:

1. ALL SPECIFICATIONS ARE SUBJECT TO CHANGE NOTICE AT ANY TIME
2. CUSTOMER OUTLINE DRAWING FOR REFERENCE ONLY

REV	DESCRIPTION OF REVISION	ECN NO.	BY	DATE	APPROVED
A	Initial Release		T. Shihua	13/05/15	13/05/15

DRAWN: T. Shihua 13/05/15
ENGINEER: C. Tao 13/05/15
APPROVED: W. Qiang 13/05/15
TOLERANCES UNLESS OTHERWISE SPECIFIED
X ±0.50
.X ±0.20
.XX ±0.10
ANGLES ±1°

TITLE:
RF Coaxial Connector
N male Conn. For LMR600 cable



PART NO: N-J600Y	SCALE: N/A	SHEET: 1/1	REV: A
------------------	------------	------------	--------