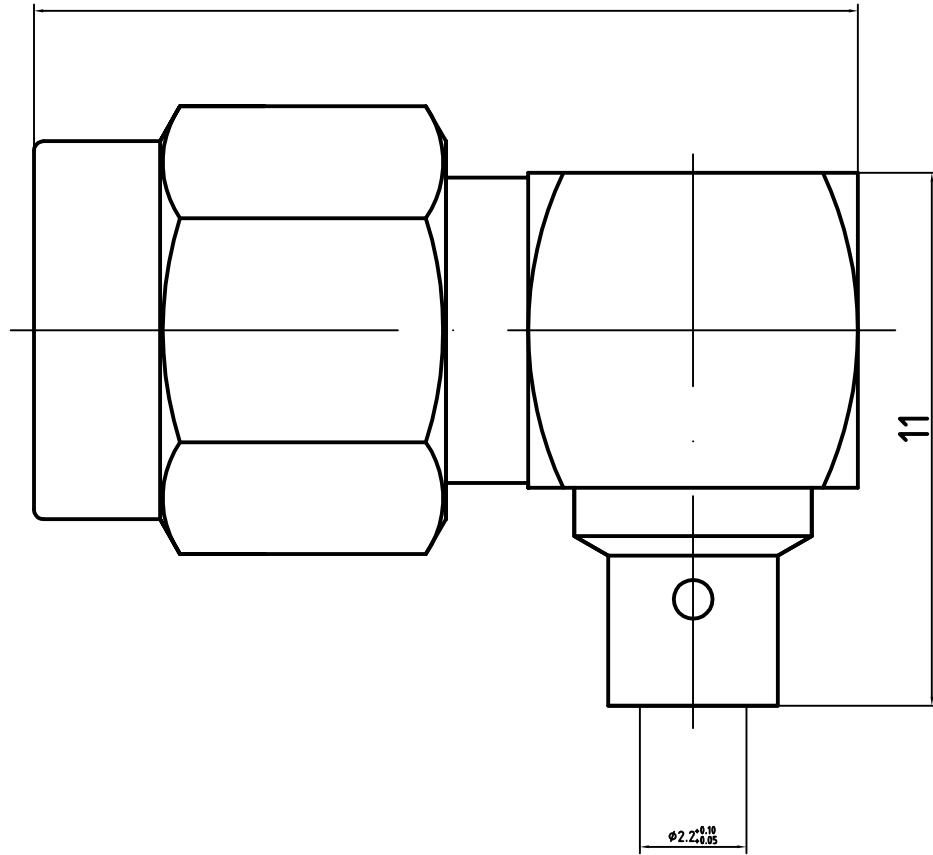


This document contains proprietary information and such information may not be disclosed to others for any purposes, nor used for sales/marketing/procurement purposes without written permission  
 本文件包含专有信息，没有书面许可，该信息不能以任何形式披露给第三方，也不能用于任何目的的买卖、销售及采购。

(17)



电气指标:

1. 频率范围: DC~6GHz
  2. 接触电阻  
内导体:  $\leq 3 \text{ m}\Omega$   
外导体:  $\leq 2 \text{ m}\Omega$
  3. 绝缘电阻:  $\geq 5000 \text{ M}\Omega$
  4. 介质耐压: 1000V(rms)
  5. 使用寿命: 500次
- 执行标准: GB681A(MIL-C-39012)

材料&镀层

1. 中心接触件: 黄铜, 镀金
  2. 外壳: 黄铜, 镀金
  3. 绝缘子: PTFE
- 适配电缆: RG405

Electrical Characteristics:

1. Frequency range: DC~6GHz
2. Contact resistance  
Center conductor:  $\leq 3 \text{ m}\Omega$   
Out conductor:  $\leq 2 \text{ m}\Omega$
3. Insulation resistance:  $\geq 5000 \text{ M}\Omega$
4. Insulator withstanding: 1000V(rms)
5. Durability: 500cycles

Application: GB681A(MIL-C-39012)

Material&Finishing

1. Center contact: **Brass, gold plated**
  2. Body :brass, gold plated
  3. Insulators: PTFE
- Cable code: RG405

FIRST ANGLE PROJECTION		SCALE	SMA-JWB2	UNITS	UNLESS OTHERWISE SPECIFIED DIMENSIONS ARE mm, TOLERANCES ARE: FRACTIONS DECIMALS ANGLES .X± .20 ±1° .XX± .10 .XXX±
THIRD ANGLE PROJECTION		2:1		mm	
	NAME	DATE	射频频同轴连接器	REV	
DRAWN	Mike Wang	08-01-12		V1.0	
CHECKED	Magi Wang	08-01-12			
APPROVED	Teresa Shen	08-01-12			

Xi'an T-rely Electronics Co.,Ltd.