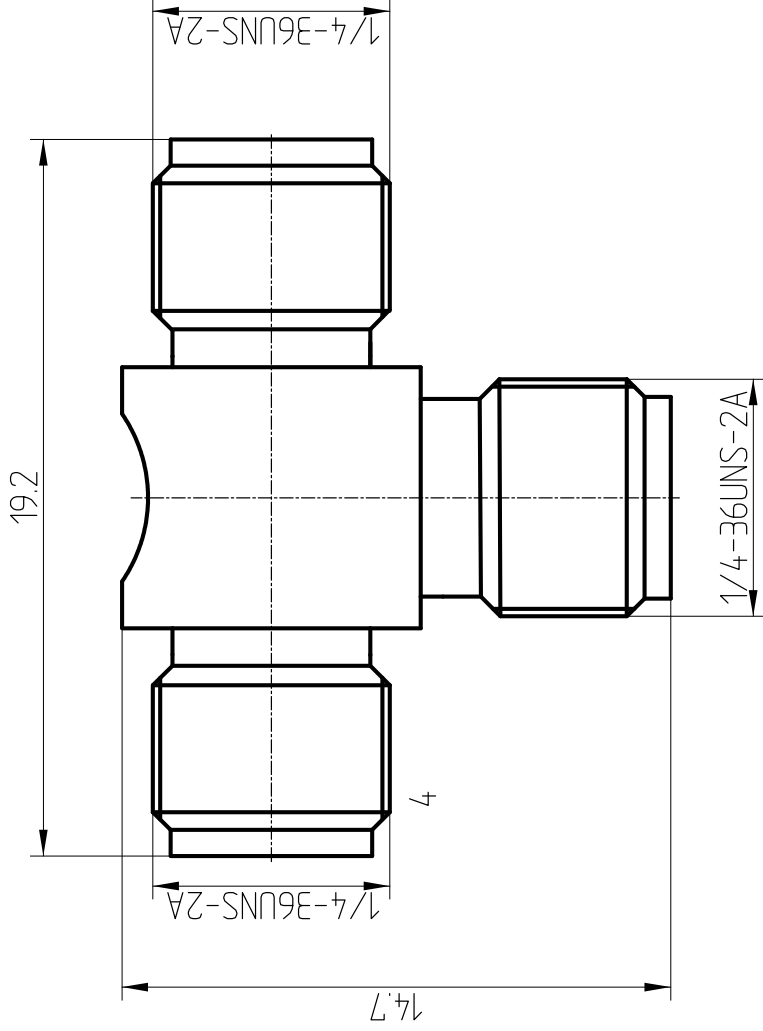


This document contains proprietary information and such information may not be disclosed to others for any purposes, not used for sales/marketing/procurement purposes without written permission



1 Materials & plating

- 1.1 Body: Brass, Gold plated
- 1.2 Insulator: Teflon
- 1.3 Contact Pin: Phosphor Bronze, Gold plated

Notes:

- 1. ALL SPECIFICATIONS ARE SUBJECT TO CHANGE NOTICE AT ANY TIME
- 2. CUSTOMER OUTLINE DRAWING FOR REFERENCE ONLY

REV	DESCRIPTION OF REVISION	ECN NO.	BY	DATE	APPROVED
A	Initial Release		T. Shihua	31/10/17	31/10/17

DRAWN : T. Shihua 31/10/17		TITLE: RF Adaptor		www.trf.com	
ENGINEER: C. Tao 31/10/17		SMA Female to Female to Female		DIMENSION IN MILLIMETERS (mm)	
APPROVED : W. Qiang 31/10/17		PART NO: SMA-KKK		SIZE: A4	
TOLERANCES UNLESS OTHERWISE SPECIFIED		SCALE: N/A		SHEET: 1/1	
X ±0.50	ANGLES ±°		REV: A		4
.X ±0.20					3
.XX ±0.10					2
					1