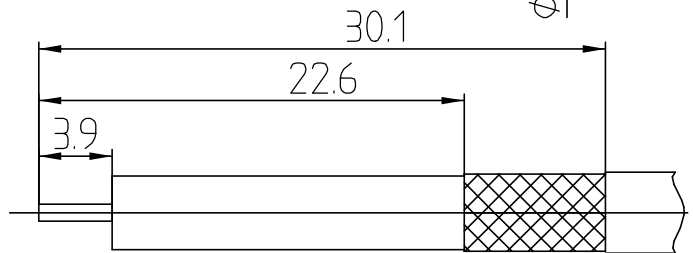
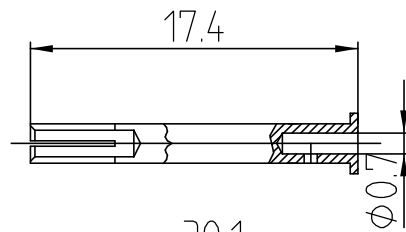
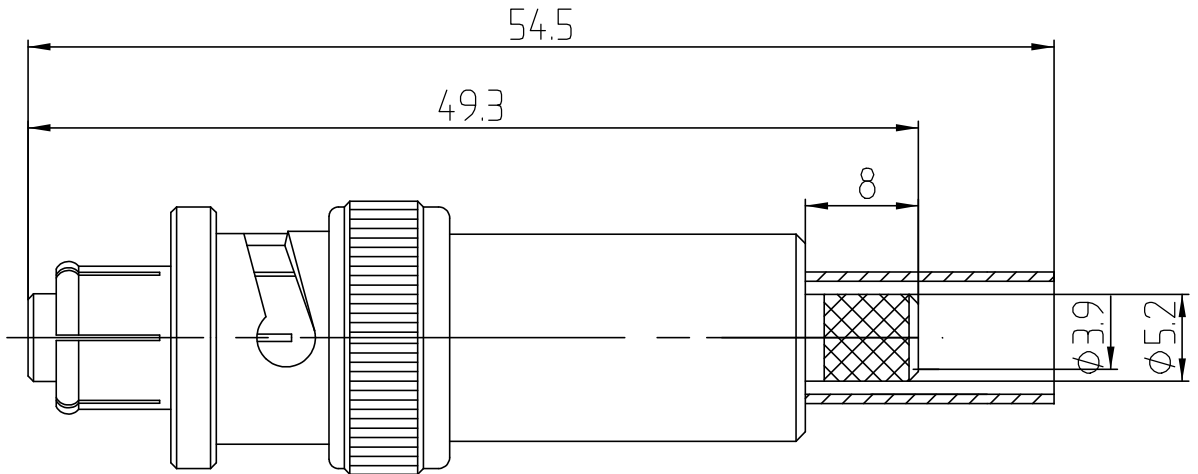


This document contains proprietary information and such information may not be disclosed to others for any purposes, nor used for sales/marketing/procurement purposes without written permission

本文件包含专有信息，没有书面许可，该信息不能以任何形式披露给第三方，也不能用于任何目的的买卖，销售及采购。



1 Electrical

1.1 Impedance: 50  $\Omega$

1.2 Frequency: DC-300MHz

2 Mechanical

2.1 Center contact: solder

2.2 Outer contact: crimped

2.3 Weight: 0.018 kg

2.4 Suitable cable: RG59 B/U

3 Environmental

3.1 Operating temperature -65° to 165°

3.2 RoHs compliant

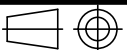
4 Material&Finish

4.1 Inner Contact: phosphor bronze, gold plated

4.2 Outer Contact: nickel, gold plated

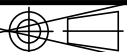
4.3 Insulators: PTFE

FIRST ANGLE PROJECTION



SCALE

THIRD ANGLE PROJECTION



1:1

SHV-k6Y

SHV female for RG59 cable

UNITS

mm

REV

V1.0

UNLESS OTHERWISE SPECIFIED  
DIMENSIONS ARE mm, TOLERANCES ARE:  
FRACTIONS DECIMALS ANGLES

.X± .20 ± 1°  
.XX± .10  
.XXX±

	NAME	DATE
DRAWN	Tomson Tang	1-3-12
CHECKED	Magi Wang	1-3-12
APPROVED	Teresa Shen	1-3-12

Xi'an T-rely Electronics Co.,Ltd.