

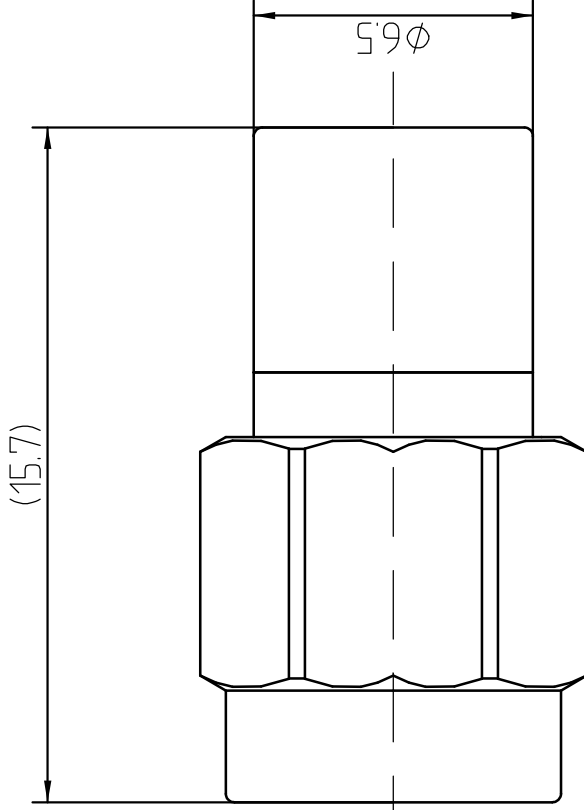
This document contains proprietary information and such information may not be disclosed to others for any purposes, not used for sales/marketing/procurement purposes without written permission

1 Electrical

- 1.1 Impedance 50 Ω
- 1.2 Frequency DC~40GHz
- 1.3 VSWR 1.3:1
- 1.4 Power 0.5Wmax

2 Materials & plating

- 2.1 Body: Stainless Steel; Passivated
- 2.2 Insulator: Pei
- 2.3 Contact Pin: Beryllium-copper, gold plated
- 2.4 Nut: Stainless Steel; Passivated



REV	DESCRIPTION OF REVISION	ECN NO.	BY	DATE	APPROVED
A	Initial Release		T. Haiyum	18/03/17	18/03/17

Notes:

- 1. ALL SPECIFICATIONS ARE SUBJECT TO CHANGE NOTICE AT ANY TIME
- 2. CUSTOMER OUTLINE DRAWING FOR REFERENCE ONLY

DRAWN: T. Haiyum 18/03/17
ENGINEER: C. Tao 18/03/17
APPROVED: W. Qiang 18/03/17
TOLERANCES UNLESS OTHERWISE SPECIFIED
X +0.50
XX +0.20
ANGLES ±°

TITLE:	
TERMINATION	
2.92mm Male Conn. Termination	
PART NO:	2.92-50JRA

		www.trf-rf.com	
		DIMENSION IN MILLIMETERS (mm)	
SIZE: A4	SCALE: N/A	SHEET: 1/1	REV: A