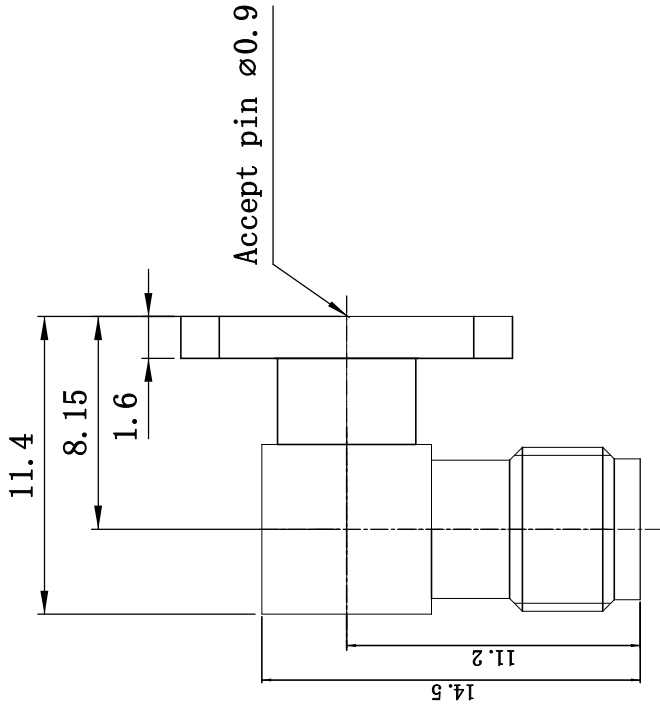


This document contains proprietary information and such information may not be disclosed to others for any purposes, not used for sales/marketing/procurement purposes without written permission



- 1 Electrical**
- 1.1 Impedance 50 Ω
  - 1.2 Dielectric withstanding voltage 1000V (volts RMS)
  - 1.3 Center contact resistance ≤ 3MΩ
  - 1.4 Outer contact resistance ≤ 2MΩ
  - 1.5 Insulation resistance: ≥5000MΩ

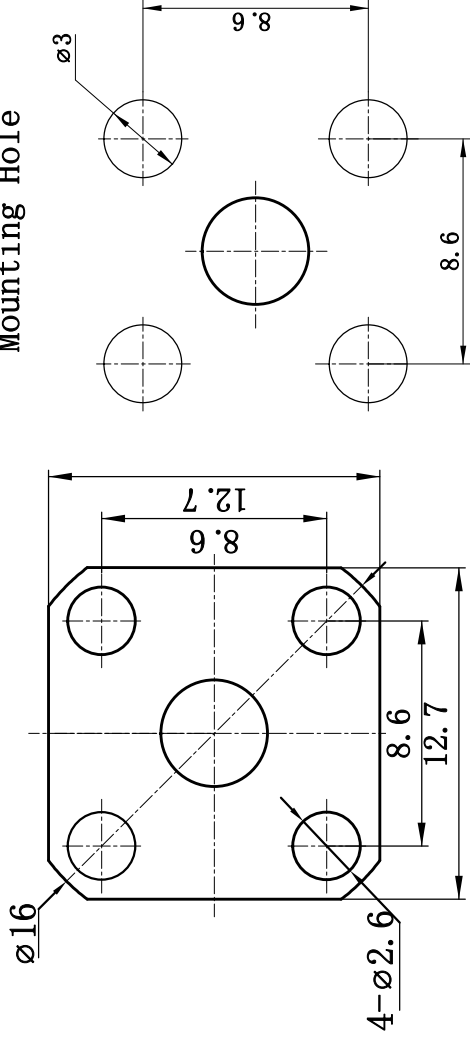
- 2 Environmental&Mechanical**
- 2.1 Temperature range -45°C~85°C
  - 2.2 RoHS Compliant
  - 2.3 Durability >500 cycles

- 3 Materials&plating**
- 3.1 Body: Brass, Gold plated
  - 3.2 Insulator: Teflon
  - 3.3 Contact Pin: Beryllium Copper Gold plated

**Notes:**

- 1. ALL SPECIFICATIONS ARE SUBJECT TO CHANGE NOTICE AT ANY TIME
- 2. CUSTOMER OUTLINE DRAWING FOR REFERENCE ONLY

**Mounting Hole**



REV	DESCRIPTION OF REVISION	ECN NO.	BY	DATE	APPROVED
A	Initial Release		T. Haiyun	12/7/08	12/7/08

DRAWN: T. Haiyun 12/07/08		TITLE: RF Coaxial Connector	
ENGINEER: C. Tao 12/07/08		www.rf-connector-china.com	
APPROVED: W. Qiang 12/07/08		SMA Female Right Angle Flange	
TOLERANCES UNLESS OTHERWISE SPECIFIED		Conn. Apply for Pin Dia 0.9	
X	±0.50	SCALE:	N/A
.X	±0.20	SIZE:	A4
.XX	±0.10	SHEET:	1/1
ANGLES	±1°	REV:	A
PART NO: SMA-KWFD0.9		DIMENSION IN MILLIMETERS (mm)	

