

This document contains proprietary information and such information may not be disclosed to others for any purposes, not used for sales/marketing/procurement purposes without written permission

REV	DESCRIPTION OF REVISION	ECN NO.	BY	DATE	APPROVED
A	Initial Release		T.Shihua	30/03/16	30/03/16

1 Technical Data:

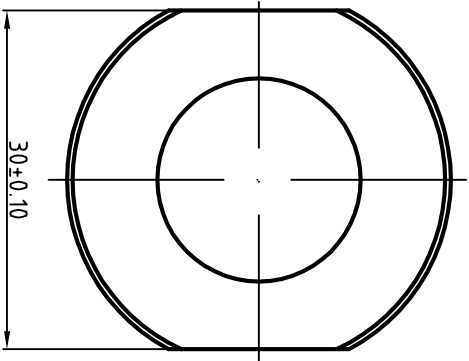
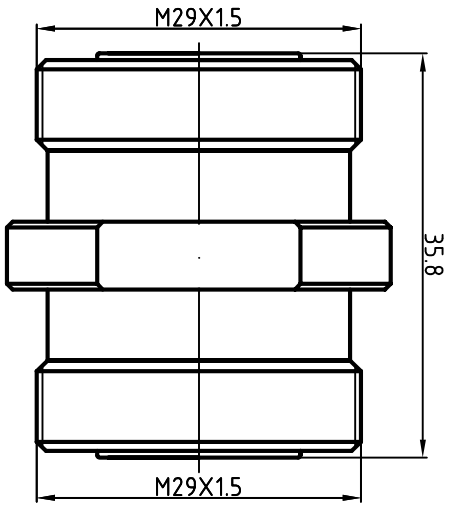
- 1.1 Impedence: 50 Ω
- 1.2 Frequency: DC~3GHz
- 1.3 Dielectric withstanding voltage: $\geq 4000V$ rms
- 1.4 Insulation resistance: $\geq 10000M\Omega$
- 1.5 Center contact resistance: ≤ 0.4 m Ω
- 1.6 Outer contact resistance: ≤ 1.5 m Ω

2 Environmental&Mechanical

- 2.1 Temperature range: -40 $^{\circ}$ C~70 $^{\circ}$ C
- 2.2 RoHs Compliant
- 2.3 Durability: >500 cycles

3 Materials&plating

- 3.1 Body: Brass, Suco-plated
- 3.2 Insulator: Teflon
- 3.3 Contact Pin: Bronze, Silver plated



Notes:

- 1. ALL SPECIFICATIONS ARE SUBJECT TO CHANGE NOTICE AT ANY TIME
- 2. CUSTOMER OUTLINE DRAWING FOR REFERENCE ONLY

DRAWN: T.Shihua 30/03/16		TITLE: 7/16-KK	
ENGINEER: C.Too 30/03/16		7/16 (L29) Type Female to Female Adapter	
APPROVED: W.Qiang 30/03/16		PART NO: TRL-Z10-189045	
TOLERANCES UNLESS OTHERWISE SPECIFIED		SIZE: A4	
X	±0.30	SCALE: N/A	
X	±0.20	SHEET: 1/1	
XX	±0.10	REV: A	
ANGLES	±1 $^{\circ}$	www.terlial.com	



DIMENSION IN MILLIMETERS (mm)