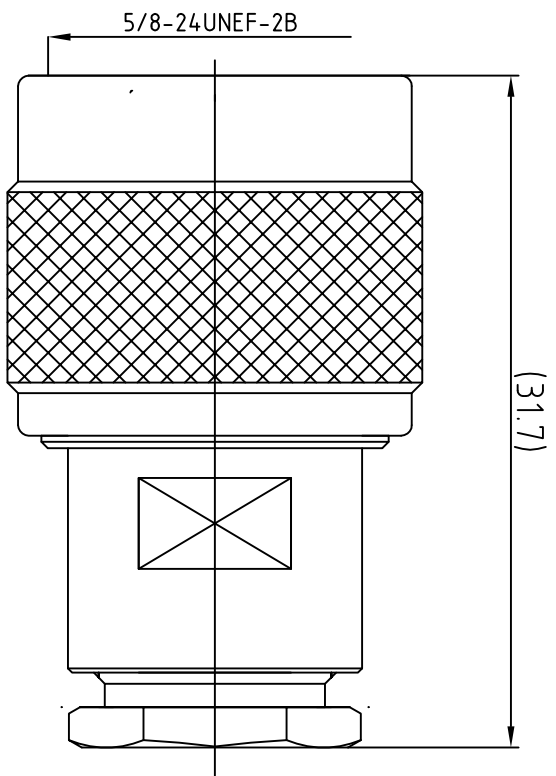


This document contains proprietary information and such information may not be disclosed to others for any purposes, not used for sales/marketing/procurement purposes without written permission


REV	DESCRIPTION OF REVISION	ECN NO.	BY	DATE	APPROVED
A	Initial Release		T.Shihua	13/05/15	13/05/15



- 1 Electrical
 - 1.1 Impedence 50 Ω
 - 1.2 Frequency DC~6GHz
 - 1.2 Dielectric withstanding voltage 1500V(volts RMS)
 - 1.3 Working Voltage: 1000V rms
 - 1.5 Insulation resistance: $\geq 5000M\Omega$
- 2 Environmental&Mechanical
 - 2.1 Temperature range -40 $^{\circ}$ C~85 $^{\circ}$ C
 - 2.2 RoHs Compliant
 - 2.3 Durability >500 cycles
- 3 Materials&plating
 - 3.1 Body: Brass, Nickel plated
 - 3.2 Insulator: Teflon
 - 3.3 Contact Pin: Brass, Gold plated
 - 3.4 Ferrule: Copper, Nickel plated
 - 3.5 Coupling nut: Brass, Nickel plated

Notes:

- 1. ALL SPECIFICATIONS ARE SUBJECT TO CHANGE NOTICE AT ANY TIME
- 2. CUSTOMER OUTLINE DRAWING FOR REFERENCE ONLY

DRAWN: T.Shihua 13/05/15	TITLE: N-J300B	 www.terullal.com
ENGINEER: C.Too 13/05/15	N male Conn. For LMR300 cable Push Fit Clamp	
APPROVED: W.Qiang 13/05/15	PART NO: TRL-NM-103529	SIZE: A4 SCALE: N/A SHEET: 1/1 REV: A
TOLERANCES UNLESS OTHERWISE SPECIFIED X .010 XX .005 ANGLES 45 $^{\circ}$		