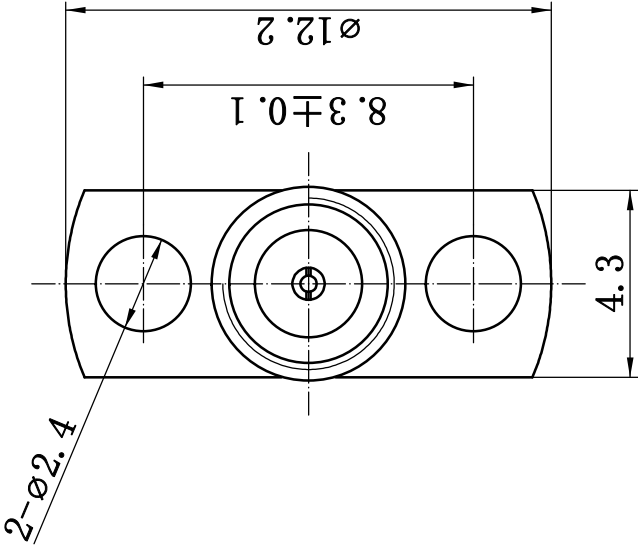
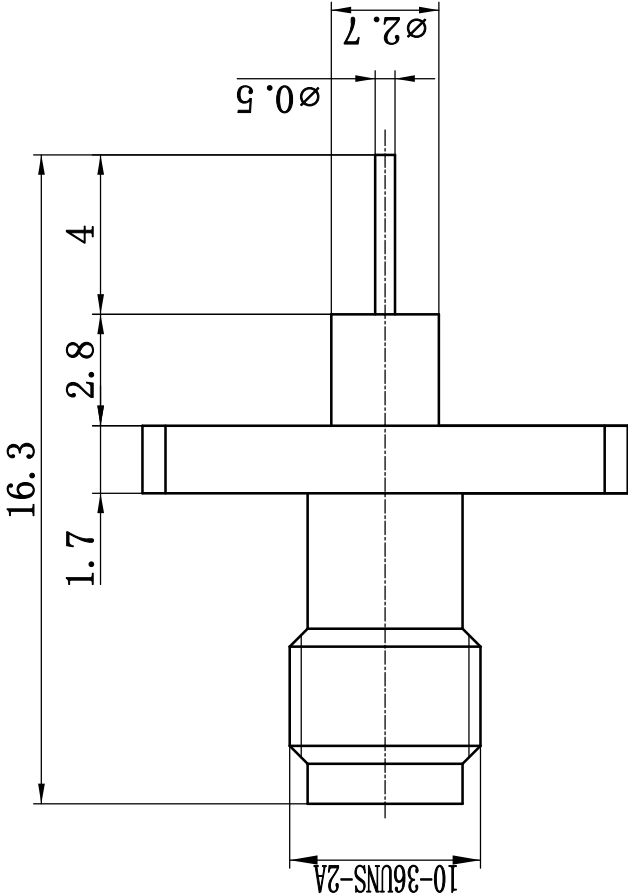


This document contains proprietary information and such information may not be disclosed to others for any purposes, not used for sales/marketing/procurement purposes without written permission



1 Electrical

- 1.1 Impedance 50 Ω
- 1.2 Frequency DC~18GHz
- 1.3 VSWR 1.30:1

2 Environmental&Mechanical

- 2.1 Temperature range -45℃~+125℃
- 2.2 RoHs Compliant
- 2.3 Durability >500 cycles

3 Materials&plating

- 3.1 Body: Brass; Gold plated
- 3.2 Insulator: Teflon
- 3.3 Contact Pin: Beryllium-Copper, Gold plated

Notes:

- 1. ALL SPECIFICATIONS ARE SUBJECT TO CHANGE NOTICE AT ANY TIME
- 2. CUSTOMER OUTLINE DRAWING FOR REFERENCE ONLY

| REV | DESCRIPTION OF REVISION | ECN NO. | BY | DATE | APPROVED |
|-----|-------------------------|---------|-----------|---------|----------|
| A | Initial Release | — | T. Haiyun | 19/7/16 | 19/7/16 |

| | | | |
|---------------------------------------|--|------------------------------------|--|
| DRAWN: T. Haiyun 19/7/16 | | TITLE: | |
| ENGINEER: C. Tao 19/7/16 | | RF Coaxial Connector | |
| APPROVED: W. Qiang 19/7/16 | | SSMA Female Flange Mount Connector | |
| TOLERANCES UNLESS OTHERWISE SPECIFIED | | DIMENSION IN MILLIMETERS (mm) | |
| X ±0.50 | | A4 | |
| .X ±0.20 | | SCALE: N/A | |
| .XX ±0.10 | | SHEET: 1/1 | |
| ANGLES ±1° | | REV: A | |
| PART NO: J. SSMA-KFD179 | | www.rf-connector-china.com | |