

This document contains proprietary information and such information may not be disclosed to others for any purposes, not used for sales/marketing/procurement purposes without written permission

1

2

3

4

1

2

3

4

1

2

3

4

1

2

3

4

1

2

3

4

1

2

3

4

1

2

3

4

1

2

3

4

1

2

3

4

1

2

3

4

1

2

3

4

1

2

3

4

1

2

3

4

1

2

3

4

1

2

3

4

1

2

3

4

1

2

3

4

1

2

3

4

1

2

3

4

1

2

3

4

1

2

3

4

1

2

3

4

1

2

3

4

1

2

3

4

1

2

3

4

1

2

3

4

1

2

3

4

1

2

3

4

1

2

3

4

1

2

3

4

1

2

3

4

1

2

3

4

1

2

3

4

1

2

3

4

1

2

3

4

1

2

3

4

1

2

3

4

1

2

3

4

1

2

3

4

1

2

3

4

1

2

3

4

1

2

3

4

1

2

3

4

1

2

3

4

1

2

3

4

1

2

3

4

1

2

3

4

1

2

3

4

1

2

3

4

1

2

3

4

1

2

3

4

1

2

3

4

1

2

3

4

1

2

3

4

1

2

3

4

1

2

3

4

1

2

3

4

1

2

3

4

1

2

3

4

1

2

3

4

1

2

3

4

1

2

3

4

1

2

3

4

1

2

3

4

1

2

3

4

1

2

3

4

1

2

3

4

1

2

3

4

1

2

3

4

1

2

3

4

1

2

3

4

1

2

3

4

1

2

3

4

1

2

3

4

1

2

3

4

1

2

3

4

1

2

3

4

1

2

3

4

1

2

3

4

1

2

3

4

1

2

3

4

1

2

3

4

1

2

3

4

1

2

3

4

1

2

3

4

1

2

3

4

1

2

3

4

1

2

3

4

1

2

3

4

1

2

3

4

1

2

3

4

1

2

3

4

1

2

3

4

1

2

3

4

1

2

3

4

1

2

3

4

1

2

3

4

1

2

3

4

1

2

3

4

1

2

3

4

1

2

3

4

1

2

3

4

1

2

3

4

1

2

3

4

1

2

3

4

1

2

3

4

1

2

3

4

1

2

3

4

1

2

3

4

1

2

3

4

1

2

3

4

1

2

3

4

1

2

3

4

1

2

3

4

1

2

3

4

1

2

3

4

1

2

3

4

1

2

3

4

1

2

3

4

1

2

3

4

1

2

3

4

1

2

3

4

1

2

3

4

1

2

3

4

1

2

3

4

1

2

3

4

1

2

3

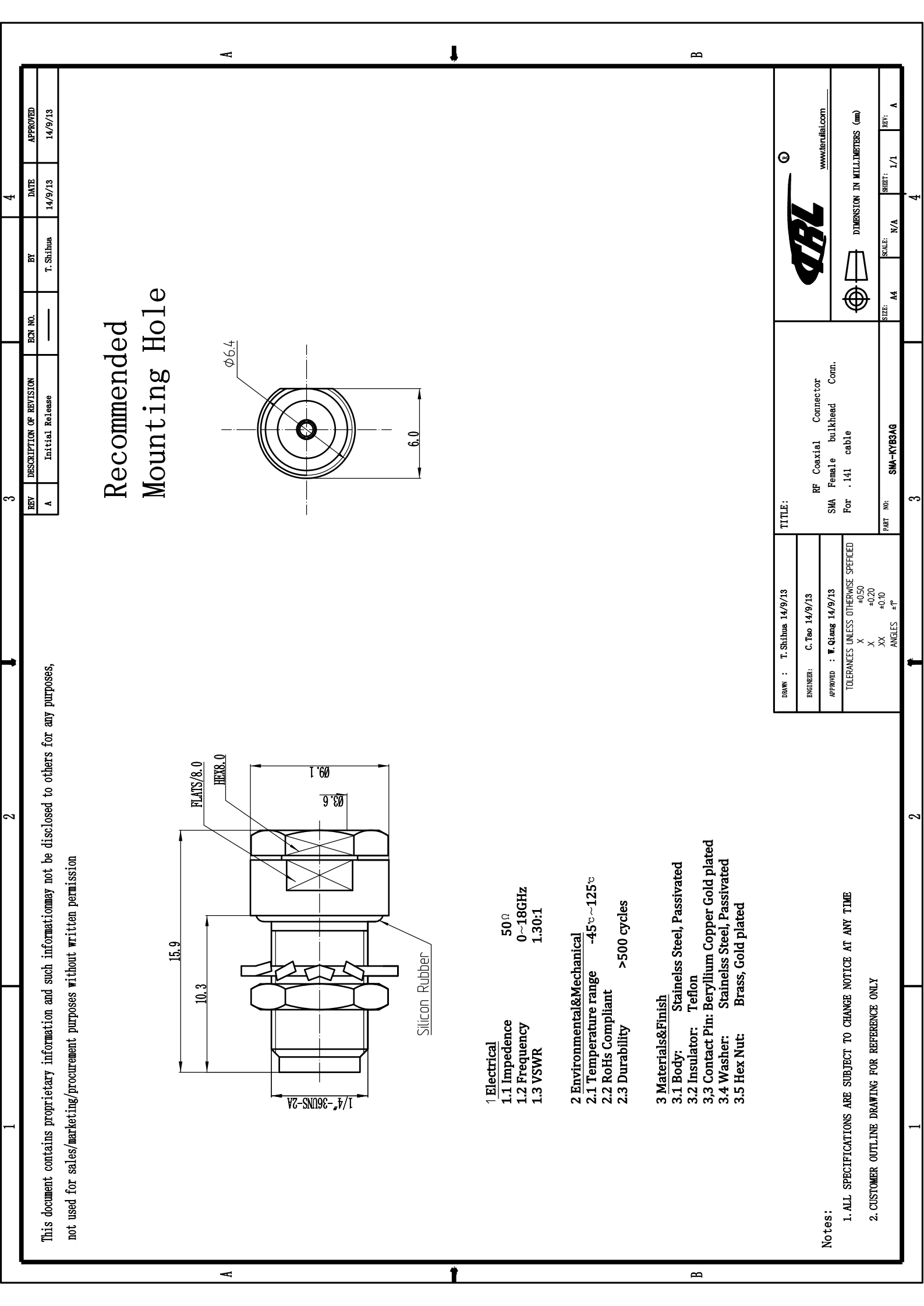
4

1

2

3

4

[illegible]

- [illegible]

This document contains proprietary information and such information may not be disclosed to others for any purposes, not used for sales/marketing/procurement purposes without written permission

### Recommended Mounting Hole

<b>REV</b>	<b>DESCRIPTION OF REVISION</b>	<b>ECN NO.</b>	<b>BY</b>	<b>DATE</b>	<b>APPROVED</b>
A	Initial Release	---	T. Shihua	14/9/13	14/9/13

**1 Electrical**

- 1.1 Impedance: 50 Ω
- 1.2 Frequency: 0~18GHz
- 1.3 VSWR: 1.30:1

**2 Environmental&Mechanical**

- 2.1 Temperature range: -45℃~125℃
- 2.2 RoHs Compliant
- 2.3 Durability: >500 cycles

**3 Materials&Finish**

- 3.1 Body: Stainless Steel, Passivated
- 3.2 Insulator: Teflon
- 3.3 Contact Pin: Beryllium Copper Gold plated
- 3.4 Washer: Stainless Steel, Passivated
- 3.5 Hex Nut: Brass, Gold plated

**Notes:**

- ALL SPECIFICATIONS ARE SUBJECT TO CHANGE NOTICE AT ANY TIME
- CUSTOMER OUTLINE DRAWING FOR REFERENCE ONLY

<b>DRAWN :</b> T. Shihua 14/9/13	<b>TITLE:</b>		
<b>ENGINEER:</b> C. Tao 14/9/13	RF Coaxial Connector		
<b>APPROVED :</b> W. Qiang 14/9/13	SMA Female bulkhead Conn.		
<b>TOLERANCES UNLESS OTHERWISE SPECIFIED</b>	For .141 cable		
X ±.050			
.X ±.020			
.XX ±.010			
ANGLES ±°			
<b>PART NO:</b> SMA-KYB3AG	<b>SIZE:</b> A4	<b>SCALE:</b> N/A	<b>SHEET:</b> 1/1
<b>REV:</b> A			

- [illegible]

[illegible]

- [illegible]

[illegible]