

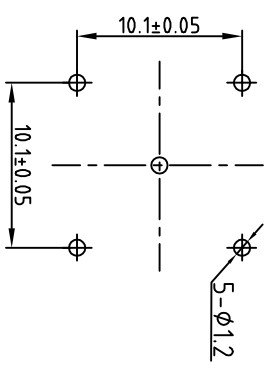
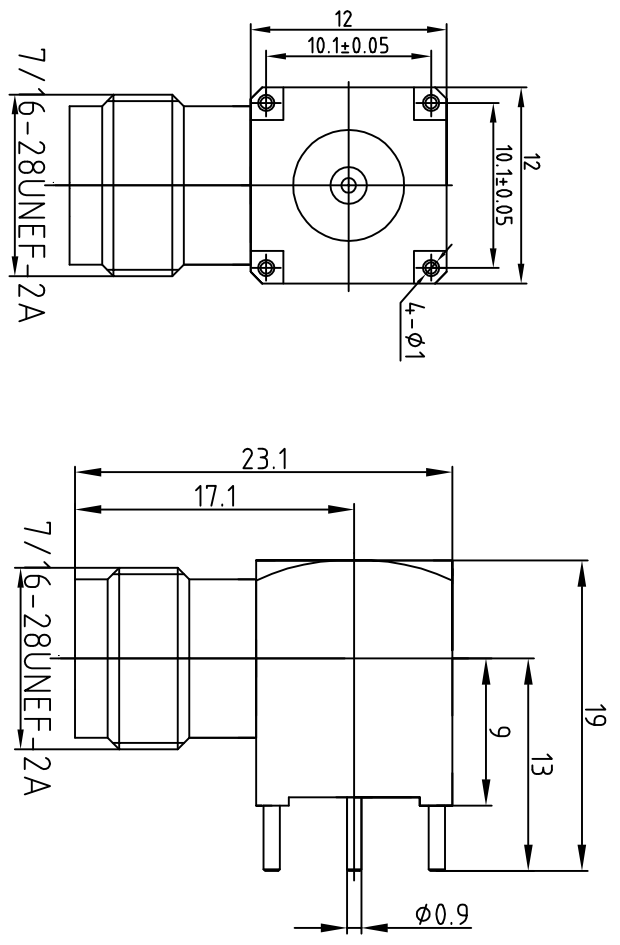
This document contains proprietary information and such information may not be disclosed to others for any purposes, not used for sales/marketing/procurement purposes without written permission

REV	DESCRIPTION OF REVISION	ECN NO.	BY	DATE	APPROVED
A	Initial Release		T.Shihua	21/11/14	21/11/14

- 1 Electrical**
- 1.1 Impedance 50Ω
  - 1.2 Frequency 0~6GHz
  - 1.3 Dielectric withstanding voltage 1500V(volts RMS)
  - 1.4 Center contact resistance ≤ 1.5MΩ
  - 1.5 Outer contact resistance ≤ 0.2MΩ
  - 1.6 Insulation resistance: ≥5000MΩ


- 2 Environmental&Mechanical**
- 2.1 Temperature range -55℃~155℃
  - 2.2 RoHs Compliant
  - 2.3 Durability >500 cycles

- 3 Materials&plating**
- 3.1 Body: Brass, nickel plating
  - 3.2 Insulator: Teflon
  - 3.3 Contact Pin: Phosphor bronze, gold plating
  - 3.6 Ferrule: copper, nickel plating



**Notes:**

- 1.ALL SPECIFICATIONS ARE SUBJECT TO CHANGE NOTICE AT ANY TIME
- 2.CUSTOMER OUTLINE DRAWING FOR REFERENCE ONLY

DRAWN: T.Shihua 21/11/14	TITLE: TNC-KWHD	 www.t-rel/tech.com
ENGINEER: C.Tao 21/11/14	TNC female R/A Conn. for PCB	
APPROVED: W.Qiang 21/11/14		
TOLERANCES UNLESS OTHERWISE SPECIFIED X ±0.50 XX ±0.20 XXX ±0.10 ANGLES 45°		
PART NO: TRL-TNCF-891026	SIZE: A4	SCALE: N/A
	SHEET: 1/1	REV: A