

This document contains proprietary information and such information may not be disclosed to others for any purposes, not used for sales/marketing/procurement purposes without written permission

REV	DESCRIPTION OF REVISION	ECN NO.	BY	DATE	APPROVED
A	Initial Release	—	T. Shihua	14/9/13	14/9/13

1 Electrical

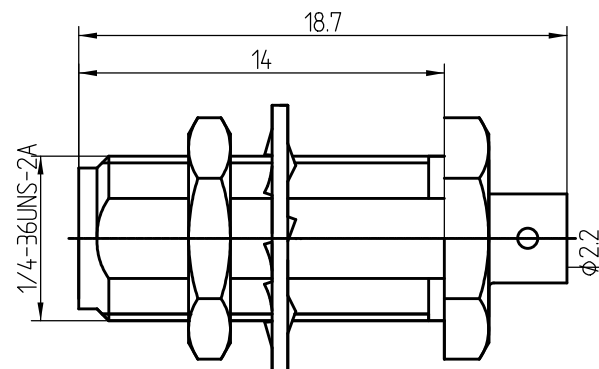
- 1.1 Impedence **50Ω**
- 1.2 Frequency **0~6GHz**
- 1.3 Dielectric withstanding voltage **1000V(volts RMS)**
- 1.4 Center contact resistance **≤ 3MΩ**
- 1.5 Outer contact resistance **≤ 2MΩ**
- 1.6 Insulation resistance: **≥5000MΩ**

2 Environmental&Mechanical

- 2.1 Temperature range **-45℃~85℃**
- 2.2 RoHs Compliant
- 2.3 Durability **>500 cycles**



3 Materials&Finish

- 3.1 Body: **Brass, Gold Plated**
- 3.2 Insulator: **Teflon**
- 3.3 Contact Pin: **Beryllium Copper Gold plated**
- 3.4 Washer: **Brass, Gold plated**
- 3.5 Hex Nut: **Brass, Gold plated**



Notes:

- 1. ALL SPECIFICATIONS ARE SUBJECT TO CHANGE NOTICE AT ANY TIME
- 2. CUSTOMER OUTLINE DRAWING FOR REFERENCE ONLY

DRAWN: T. Shihua 14/9/13	TITLE: RF Coaxial Connector SMA Female bulkhead Conn. For .086 cable	 www.trl-rf.com				
ENGINEER: C. Tao 14/9/13						
APPROVED: W. Qiang 14/9/13		 DIMENSION IN MILLIMETERS (mm)				
TOLERANCES UNLESS OTHERWISE SPECIFIED		PART NO: SMA-KYB2B	SIZE: A4	SCALE: N/A	SHEET: 1/1	REV: A
X	±0.50					
X	±0.20					
XX	±0.10					
ANGLES	±1°					