

1

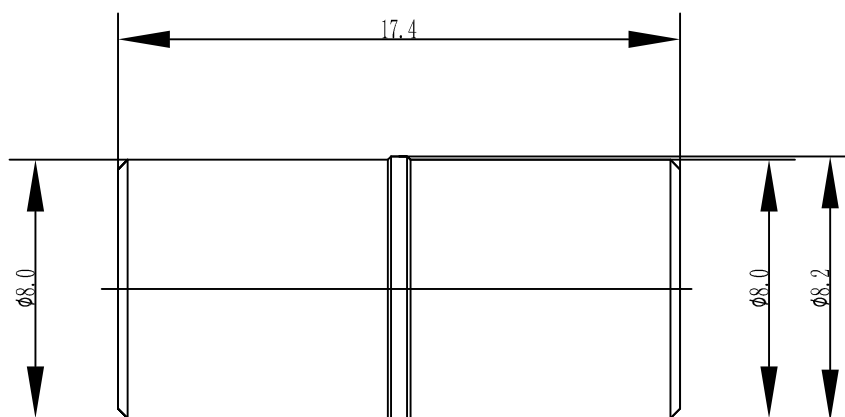
2

3

4

A

A



B

B

Electrical

1. Impedance: 75Ω
2. Frequency: $0\sim 2\text{GHz}$
3. Working voltage: $\leq 335\text{V}$
4. Insulation resistance: $\geq 1000\text{M}\Omega$
5. Dielectric strength: 1000V
6. Center contact resistance $\leq 6\text{m}\Omega$
7. Center contact resistance $\leq 1\text{m}\Omega$

C

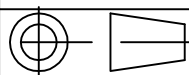
C

Material&Finish

1. Inner Contact: Beryllium copper, gold plated
2. Outer Contact: brass. gold plated
3. Insulators: Teflon
4. Spring Contact: Beryllium copper, Gold plated

D

D



Scale

1:1

SMB-75KK1

SMB Female to Female Adapter

UNLESS OTHERWISE SPECIFIED
DIMENSIONS ARE mm, TOLERANCES ARE:
FRACTIONS DECIMALS ANGLES

.X± .15 ±1°
.XX± .05
.XXX±

Name

Date

Designed

Tomson

16-Jun-15

Checked

Jason

16-Jun-15

Approved

Teresa

16-Jun-15

Danyang Teruilai Electronics Co., Ltd.