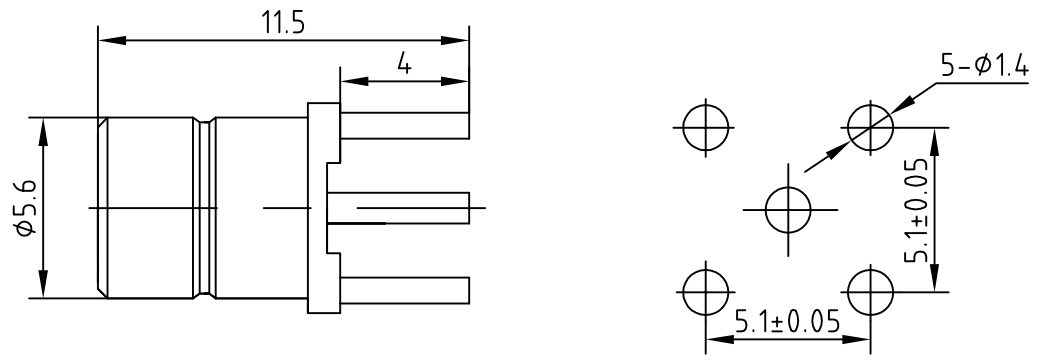


A

A



B

B

Electrical

1. Impedance: 75Ω
2. Frequency: 0~2GHz
3. Working voltage: ≤335V
4. Insulation resistance: ≥1000MΩ
5. Dielectric strength: 1000V
6. Center contact resistance ≤ 6mΩ
7. Center contact resistance ≤ 1mΩ

C

C

Material&Finish

1. Inner Contact: Brass, gold plated
2. Outer Contact: brass. gold plated
3. Insulators: Teflon

D

D

	Scale	
	1:1	
	Name	Date
Designed	Tomson	16-May-12
Checked	Jason	16-May-12
Approved	Teresa	16-May-12

SMB-75JHD1
RF Coaxial Connector

UNLESS OTHERWISE SPECIFIED
DIMENSIONS ARE mm, TOLERANCES ARE:
FRACTIONS DECIMALS ANGLES
.X± .15 ±1°
.XX± .05
.XXX±