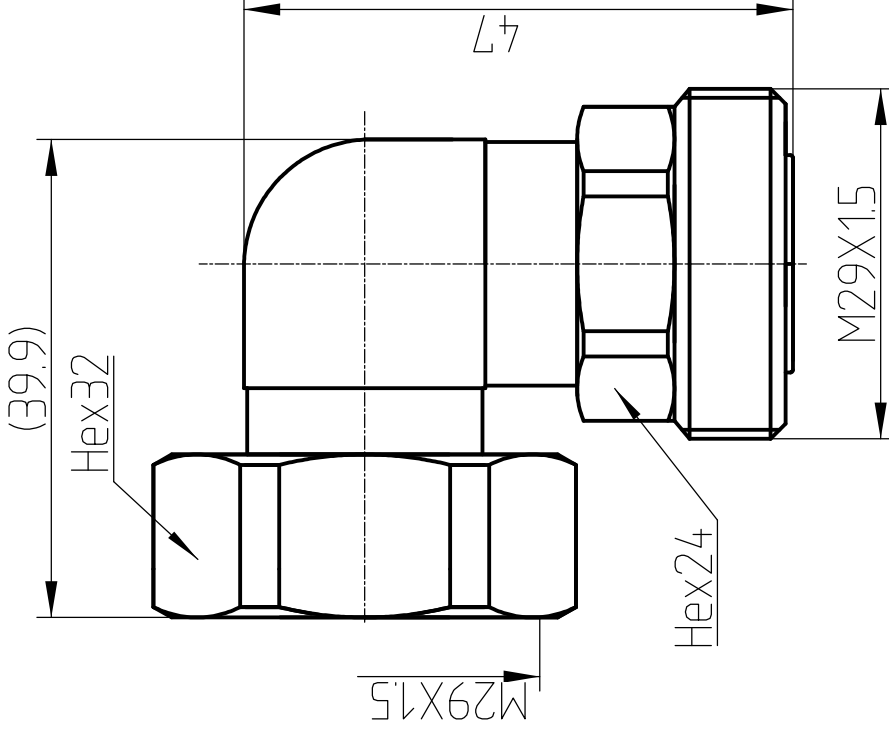


This document contains proprietary information and such information may not be disclosed to others for any purposes, not used for sales/marketing/procurement purposes without written permission

- 1 Technical Data:
 - 1.1 Impedence: 50 Ω
 - 1.2 Frequency: DC ~ 3GHz
 - 1.3 Dielectric withstanding voltage: $\geq 4000V$ rms
 - 1.4 Insulation resistance: $\geq 10000M\Omega$
 - 1.5 Center contact resistance: $\leq 0.4 m\Omega$
 - 1.6 Outer contact resistance: $\leq 15m\Omega$

- 2 Environmental & Mechanical
 - 2.1 Temperature range: $-40^{\circ}C \sim 125^{\circ}C$
 - 2.2 RoHS Compliant
 - 2.3 Durability: > 500 cycles

- 3 Materials & plating
 - 3.1 Body: Brass, Suco-plated
 - 3.2 Insulator: Teflon
 - 3.3 Contact Pin: Bronze, Silver plated



REV	DESCRIPTION OF REVISION	ECN NO.	BY	DATE	APPROVED
A	Initial Release		T. Shihua	30/03/16	30/03/16

DRAWN: T. Shihua 30/03/16		TITLE: RF Coaxial Connector		www.teruilai.com	
ENGINEER: C. Tao 30/03/16		7/16 (L29) Male to Female R/A Adapter		DIMENSION IN MILLIMETERS (mm)	
APPROVED: W. Qiang 30/03/16		PART NO: L29-JWK		SCALE: N/A	
TOLERANCES UNLESS OTHERWISE SPECIFIED		SIZE: A4		SHEET: 1/1	
X	+0.50	ANGLES		REV: A	
.X	+0.20				
.XX	+0.10				
	*F				

Notes:

1. ALL SPECIFICATIONS ARE SUBJECT TO CHANGE NOTICE AT ANY TIME
2. CUSTOMER OUTLINE DRAWING FOR REFERENCE ONLY