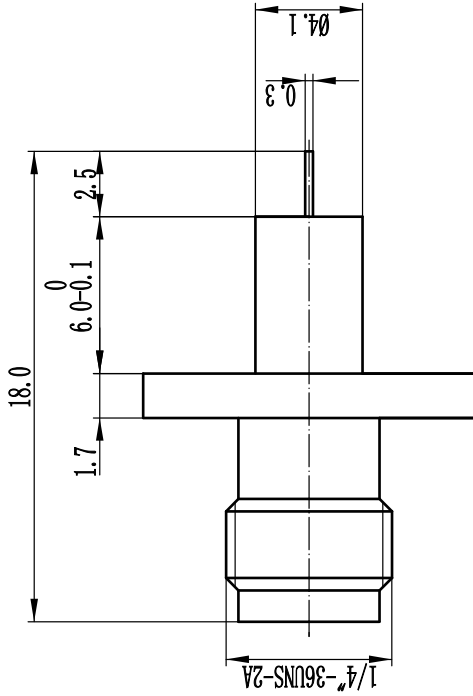
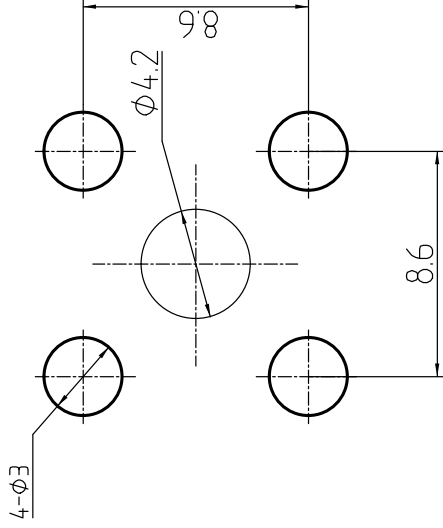


This document contains proprietary information and such information may not be disclosed to others for any purposes, not used for sales/marketing/procurement purposes without written permission

REV	DESCRIPTION OF REVISION	ECN NO.	BY	DATE	APPROVED
A	Initial Release		T. Haiyuu	3/8/16	3/8/16



Mounting Hole



1 电气性能

- 1.1 阻抗 $50\ \Omega$
- 1.2 频率 DC-18GHz
- 1.3 绝缘耐压 $1000V(\text{volts RMS})$
- 1.4 中心导体接触电阻 $\leq 3M\ \Omega$
- 1.5 外导体接触电阻 $\leq 2M\ \Omega$
- 1.6 绝缘电阻 $\geq 5000M\ \Omega$
- 1.7 驻波比 $1.2\ \text{max}$

2 材料及涂覆

- 2.1 外壳 不锈钢; 钝化
- 2.2 绝缘介质 Teflon
- 2.3 内导体 铍青铜; 镀金

Notes:

- 1. ALL SPECIFICATIONS ARE SUBJECT TO CHANGE NOTICE AT ANY TIME
- 2. CUSTOMER OUTLINE DRAWING FOR REFERENCE ONLY

DRAWN : T. Haiyuu 3/8/16

ENGINEER: C. Tao 3/8/16

APPROVED : W. Qiayang 3/8/16

TOLERANCES UNLESS OTHERWISE SPECIFIED

X ± 0.50

.X ± 0.20

.XX ± 0.10

ANGLES $\neq P$

TITLE:
射频同轴连接器

SMA-KFD1009G

PART NO: TRU-SMAP-1013G



www.crl.com



DIMENSION IN MILLIMETERS (mm)

SIZE: A4

SCALE: N/A

SHEET: 1/1

REV: A