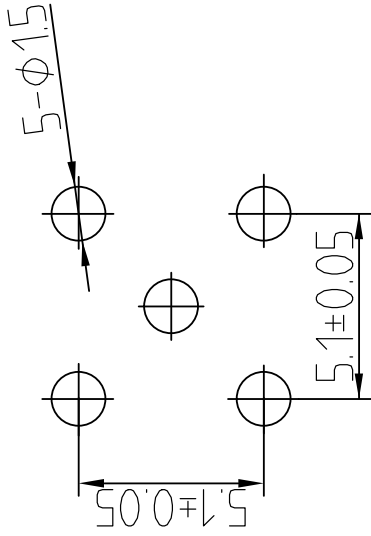


This document contains proprietary information and such information may not be disclosed to others for any purposes, not used for sales/marketing/procurement purposes without written permission

Mounting Hole



1 Electrical Data

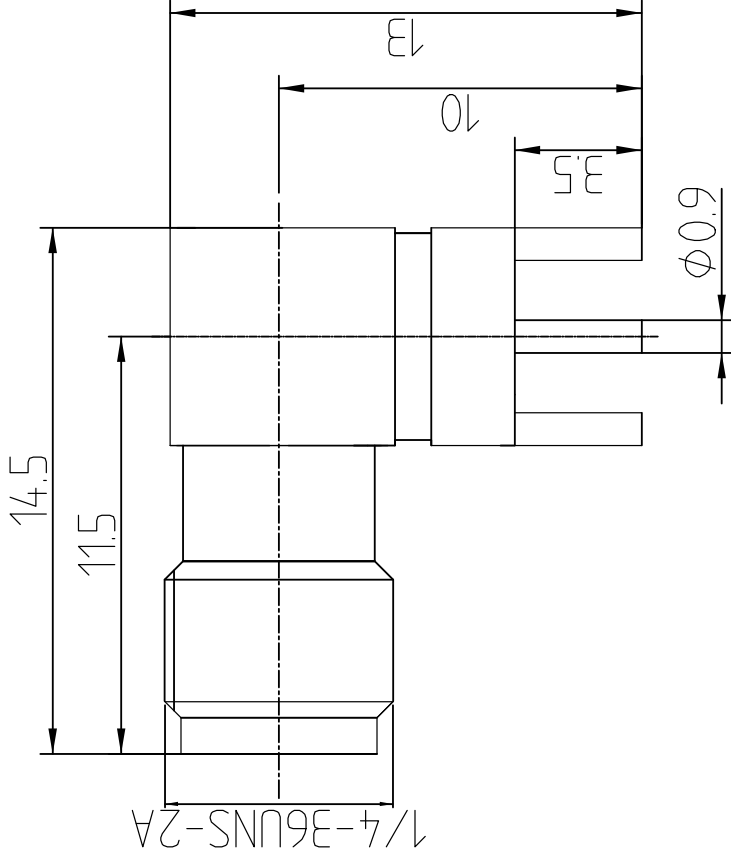
- 1.1 Impedance: 50 Ω
- 1.2 Frequency Range: 0-6GHz
- 1.3 VSWR: 1.20:1

2 Material & Finish

- 2.1 Inner Contact: gold plated over Bronze.
- 2.2 Outer Contact: gold plated over brass.
- 2.3 Insulators: Teflon

Notes:

- 1. ALL SPECIFICATIONS ARE SUBJECT TO CHANGE NOTICE AT ANY TIME
- 2. CUSTOMER OUTLINE DRAWING FOR REFERENCE ONLY



REV	DESCRIPTION OF REVISION	ECN NO.	BY	DATE	APPROVED
A	Initial Release		T. Shihua	1/9/15	1/9/15

DRAWN : T. Shihua 1/9/15		TITLE:	
ENGINEER: C. Tao 1/9/15		RF Coaxial Connector	
APPROVED : W. Qiang 1/9/15		SMA Female R/A Connector PCB	
TOLERANCES UNLESS OTHERWISE SPECIFIED		DIMENSION IN MILLIMETERS (mm)	
X	+0.50	[Symbol]	
.X	+0.20	[Symbol]	
.XX	+0.10	[Symbol]	
ANGLES *°		[Symbol]	
PART NO:	SMA-KWHD2B	SCALE:	N/A
SIZE:	A4	SHEET:	1/1
		REV:	A



www.terulai.com