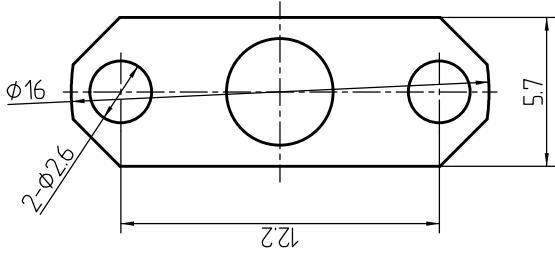
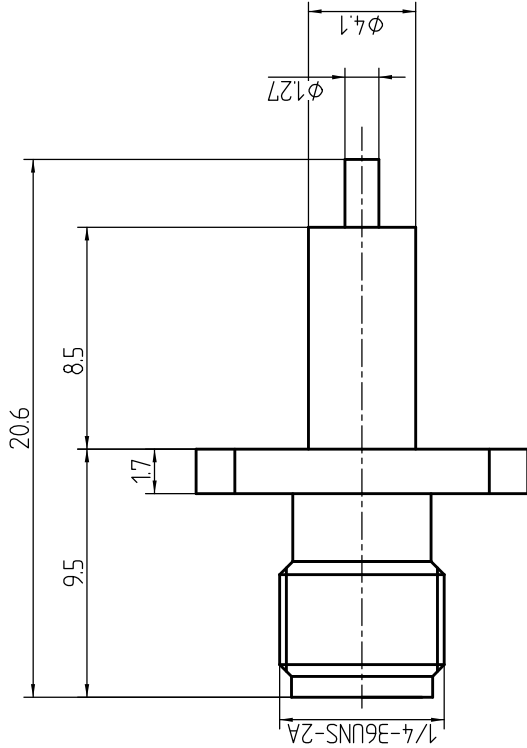
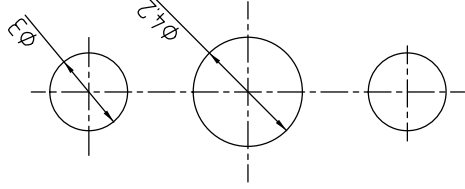


This document contains proprietary information and such information may not be disclosed to others for any purposes, not used for sales/marketing/procurement purposes without written permission



Mounting Hole



- 1 Electrical
- 1.1 Impedance  $50 \Omega$
  - 1.2 Frequency DC ~ 18GHz
  - 1.2 Dielectric withstanding voltage 1000V (volts RMS)
  - 1.3 Center contact resistance  $\leq 3M \Omega$
  - 1.4 Outer contact resistance  $\leq 2M \Omega$
  - 1.5 Insulation resistance:  $\geq 5000M \Omega$
  - 1.6 VSWR 1.25 : 1

- 2 Environmental & Mechanical
- 2.1 Temperature range  $-45^{\circ}C \sim 85^{\circ}C$
  - 2.2 RoHS Compliant
  - 2.3 Durability > 500 cycles

- 3 Materials & Plating
- 3.1 Body: Brass, Nickel plated
  - 3.2 Insulator: Teflon
  - 3.3 Contact Pin: Beryllium-copper, Gold plated

Notes:

- 1. ALL SPECIFICATIONS ARE SUBJECT TO CHANGE NOTICE AT ANY TIME
- 2. CUSTOMER OUTLINE DRAWING FOR REFERENCE ONLY

REV	DESCRIPTION OF REVISION	ECN NO.	BY	DATE	APPROVED
A	Initial Release		T. Haiyun	15/09/17	15/09/17

DRAWN: T. Haiyun 15/09/17

ENGINEER: C. Tao 15/09/17

APPROVED: W. Qiang 12/07/08

TOLERANCES UNLESS OTHERWISE SPECIFIED  
 X +0.50  
 .X +0.20  
 .XX +0.10  
 ANGLES \*°

TITLE:

RF Coaxial Connector

SMA Female Flange Conn. Terminal

PART NO: SMA-KFD1064



www.rf-connector-china.com



DIMENSION IN MILLIMETERS (mm)

SIZE: A4

SCALE: N/A

SHEET: 1/1

REV: A