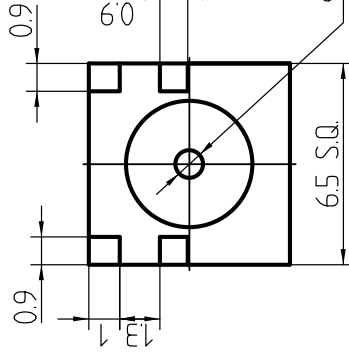
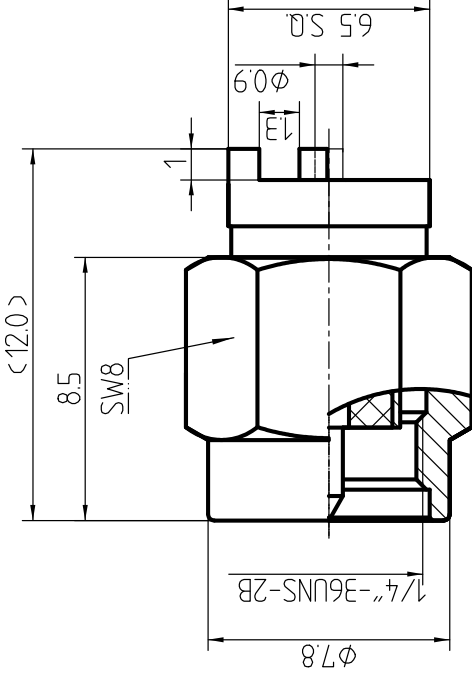


This document contains proprietary information and such information may not be disclosed to others for any purposes, not used for sales/marketing/procurement purposes without written permission

- 1 Electrical
  - 1.1 Impedence 50 Ω
  - 1.2 Frequency DC ~6GHz
  - 1.3 Dielectric withstanding voltage 1000V(volts RMS)
  - 1.4 Center contact resistance  $\leq 3M\Omega$
  - 1.5 Outer contact resistance  $\leq 2M\Omega$
  - 1.6 Insulation resistance:  $\geq 5000M\Omega$

- 2 Environmental&Mechanical
  - 2.1 Temperature range -40℃ ~+85℃
  - 2.2 RoHS Compliant
  - 2.3 Durability >500 cycles

- 3 Materials&plating
  - 3.1 Body: Brass; gold plated
  - 3.2 Insulator: Teflon
  - 3.3 Contact Pin: Brass, gold plated
  - 3.4 Nut: Brass, gold Plated
  - 3.5 Gasket: Silicon Rubber ( red color)
  - 3.6 Meet with 24h Salt spray



REV	DESCRIPTION OF REVISION	ECN NO.	BY	DATE	APPROVED
A	Initial Release		T. Haiyuu	23/5/14	23/5/14

Notes:

1. ALL SPECIFICATIONS ARE SUBJECT TO CHANGE NOTICE AT ANY TIME
2. CUSTOMER OUTLINE DRAWING FOR REFERENCE ONLY

DRAWN : T. Haiyuu 23/5/14

ENGINEER: C. Tao 23/5/14

APPROVED : W. Qiayang 23/5/14

TOLERANCES UNLESS OTHERWISE SPECIFIED

X ±0.50

.X ±0.20

.XX ±0.10

ANGLES °

TITLE:

RF Coaxial Connector

SMA Male Conn. for PCB

PART NO: SMA-JHDC2T



www.qrl.com



DIMENSION IN MILLIMETERS (mm)

SIZE: A4

SCALE: N/A

SHEET: 1/1

REV: A