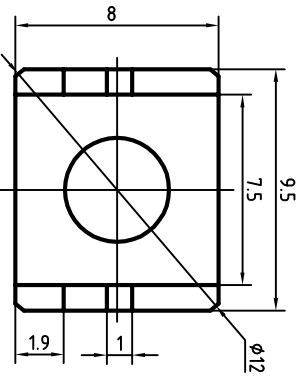
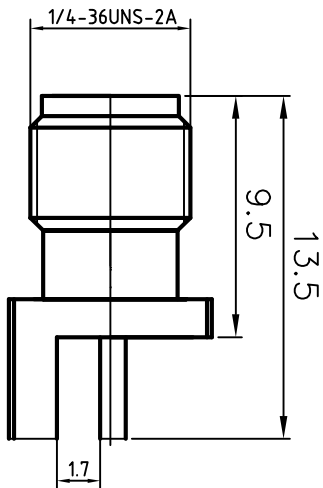


This document contains proprietary information and such information may not be disclosed to others for any purposes, not used for sales/marketing/procurement purposes without written permission

REV	DESCRIPTION OF REVISION	ECN NO.	BY	DATE	APPROVED
A	Initial Release		T.HoJyun	24/7/13	24/7/13



- 1 Electrical**
- 1.1 Impedance: 50  $\Omega$
  - 1.2 Frequency: 0~10GHz
  - 1.2 Dielectric withstanding voltage: 1000V(volts RMS)
  - 1.3 Center contact resistance:  $\leq 3M\Omega$
  - 1.4 Outer contact resistance:  $\leq 2M\Omega$
  - 1.5 Insulation resistance:  $\geq 5000M\Omega$


- 2 Environmental&Mechanical**
- 2.1 Temperature range: -55 $^{\circ}$ C~155 $^{\circ}$ C
  - 2.2 RoHS Compliant
  - 2.3 Durability: >500 cycles

- 3 Materials&plating**
- 3.1 Body: Brass, Gold, plated
  - 3.2 Insulator: Teflon
  - 3.3 Contact Pin: Beryllium Copper; Gold,plated

Notes:  
 1.ALL SPECIFICATIONS ARE SUBJECT TO CHANGE NOTICE AT ANY TIME  
 2.CUSTOMER OUTLINE DRAWING FOR REFERENCE ONLY

DRAWN: T.HoJyun 24/07/13
ENGINEER: C.Too 24/07/13
APPROVED: W.Qiang 24/07/13
TOLERANCES UNLESS OTHERWISE SPECIFIED
X ±0.30
.X ±0.20
.XX ±0.10
ANGLES 3 $^{\circ}$

TITLE: SMA-KHDC5
SMA Female Conn. End Launch
PART NO: TRL-SMAF-5129


  
 www.treltech.com

DIMENSION IN MILLIMETERS (mm)

SIZE: A4    SCALE: 1:1    SHEET: 1/1    REV: A