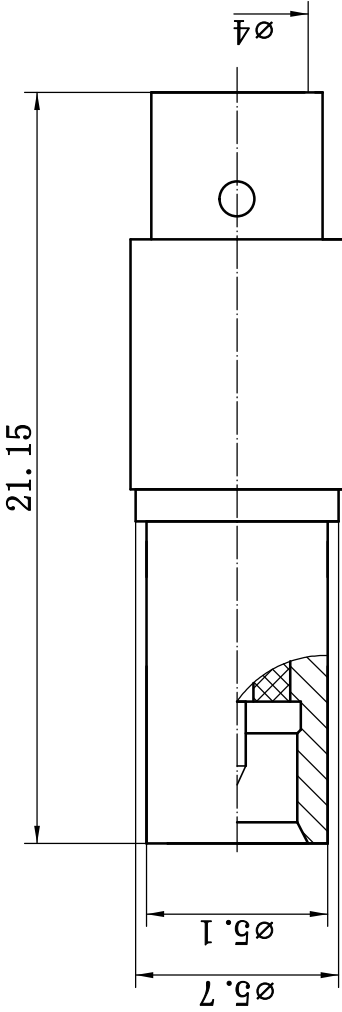


This document contains proprietary information and such information may not be disclosed to others for any purposes, not used for sales/marketing/procurement purposes without written permission





- 1 Electrical Data
  - 1.1 Impedance: 50 Ω
  - 1.2 Frequency: DC-6GHz
  - 1.3 VSWR: 1.30:1
- 2 Material&Finish
  - 2.1 Inner Contact: Brass, gold plated
  - 2.2 Outer Contact: brass, gold plated
  - 2.3 Insulators: Teflon

**Notes:**

- 1. ALL SPECIFICATIONS ARE SUBJECT TO CHANGE NOTICE AT ANY TIME
- 2. CUSTOMER OUTLINE DRAWING FOR REFERENCE ONLY

REV	DESCRIPTION OF REVISION	ECN NO.	BY	DATE	APPROVED
A	Initial Release		T. Haiyun	15/09/17	15/09/17

DRAWN: T. Haiyun 15/09/17 ENGINEER: C. Tao 15/09/17 APPROVED: W. Qiang 12/07/08 TOLERANCES UNLESS OTHERWISE SPECIFIED X ±0.50 .X ±0.20 .XX ±0.10 ANGLES ±1°	<b>TITLE:</b> RF Coaxial Connector RP MCX Female Conn. For 50-4 Coable	 <a href="http://www.rf-connector-china.com">www.rf-connector-china.com</a>
PART NO: RPMCX-JT1		 DIMENSION IN MILLIMETERS (mm)
SIZE: A4	SCALE: N/A	SHEET: 1/1