

This document contains proprietary information and such information may not be disclosed to others for any purposes, not used for sales/marketing/procurement purposes without written permission

### 1 Electrical

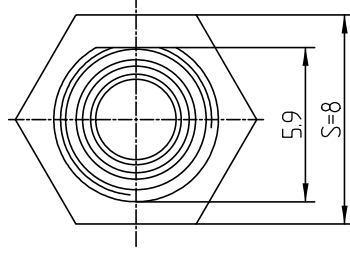
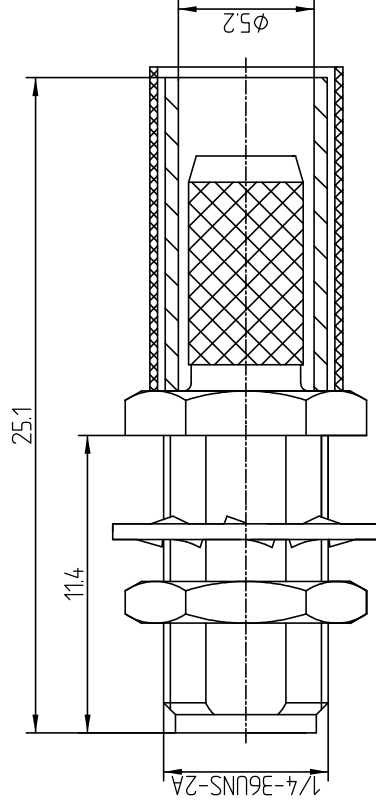
- 1.1 Impedance **50 Ω**
- 1.2 Frequency **0~6GHz**
- 1.3 Dielectric withstanding voltage **1000V(volts RMS)**
- 1.4 Center contact resistance **≤3M Ω**
- 1.5 Outer contact resistance **≤2M Ω**
- 1.6 Insulation resistance: **≥5000M Ω**

### 2 Environmental&Mechanical

- 2.1 Temperature range **-45℃~85℃**
- 2.2 RoHs Compliant
- 2.3 Durability **>500 cycles**

### 3 Materials&Finish

- 3.1 Body: **Brass, Gold Plated**
- 3.2 Insulator: **Teflon**
- 3.3 Contact Pin: **Bronze, Gold plated**
- 3.4 Washer: **Brass, Gold plated**
- 3.5 Hex Nut: **Brass, Gold plated**



| REV | DESCRIPTION OF REVISION | ECN NO. | BY        | DATE    | APPROVED |
|-----|-------------------------|---------|-----------|---------|----------|
| A   | Initial Release         |         | T. Shihua | 14/9/13 | 14/9/13  |

|                                       |       |                               |            |
|---------------------------------------|-------|-------------------------------|------------|
| DRAWN: T. Shihua 14/9/13              |       | TITLE: RF Coaxial Connector   |            |
| ENGINEER: C. Tao 14/9/13              |       | www.tfh-f.com                 |            |
| APPROVED: W. Qiang 14/9/13            |       | DIMENSION IN MILLIMETERS (mm) |            |
| TOLERANCES UNLESS OTHERWISE SPECIFIED |       | SCALE: N/A                    |            |
| X                                     | +0.50 | A4                            | SHEET: 1/1 |
| X                                     | +0.20 |                               | REV: A     |
| XX                                    | +0.10 |                               |            |
| ANGLES ±1°                            |       | PART NO: SMA-KY200            |            |

### Notes:

- 1. ALL SPECIFICATIONS ARE SUBJECT TO CHANGE NOTICE AT ANY TIME
- 2. CUSTOMER OUTLINE DRAWING FOR REFERENCE ONLY