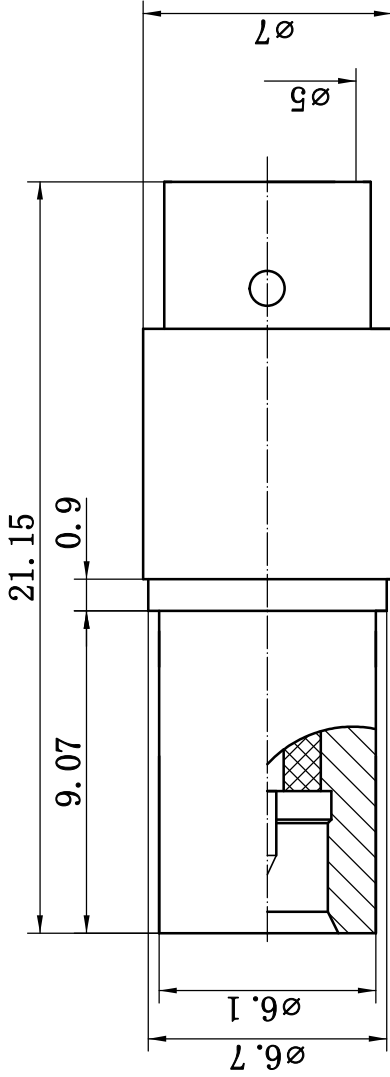


This document contains proprietary information and such information may not be disclosed to others for any purposes, not used for sales/marketing/procurement purposes without written permission



- 1 Electrical Data
  - 1.1 Impedance:  $50 \Omega$
  - 1.2 Frequency: DC-6GHz
  - 1.3. VSWR: 1.30:1
- 2 Material&Finish
  - 2.1 Inner Contact: Berass, gold plated
  - 2.2 Outer Contact: brass, gold plated
  - 2.3 Insulators: Teflon

REV	DESCRIPTION OF REVISION	ECN NO.	BY	DATE	APPROVED
A	Initial Release		T. Haiyun	15/09/17	15/09/17

Notes:

1. ALL SPECIFICATIONS ARE SUBJECT TO CHANGE NOTICE AT ANY TIME
2. CUSTOMER OUTLINE DRAWING FOR REFERENCE ONLY

DRAWN: T. Haiyun 15/09/17

ENGINEER: C. Tao 15/09/17

APPROVED: W. Qiang 12/07/08

TOLERANCES UNLESS OTHERWISE SPECIFIED

X  $\pm 0.50$

.X  $\pm 0.20$

.XX  $\pm 0.10$

ANGLES  $\pm 1^\circ$

TITLE:

RF Coaxial Connector

RP MCX Female Conn. For 50-5 Caable

PART NO: RPMCX-JT2



www.rf-connector-china.com



DIMENSION IN MILLIMETERS (mm)

SIZE: A4

SCALE: N/A

SHEET: 1/1

REV: A