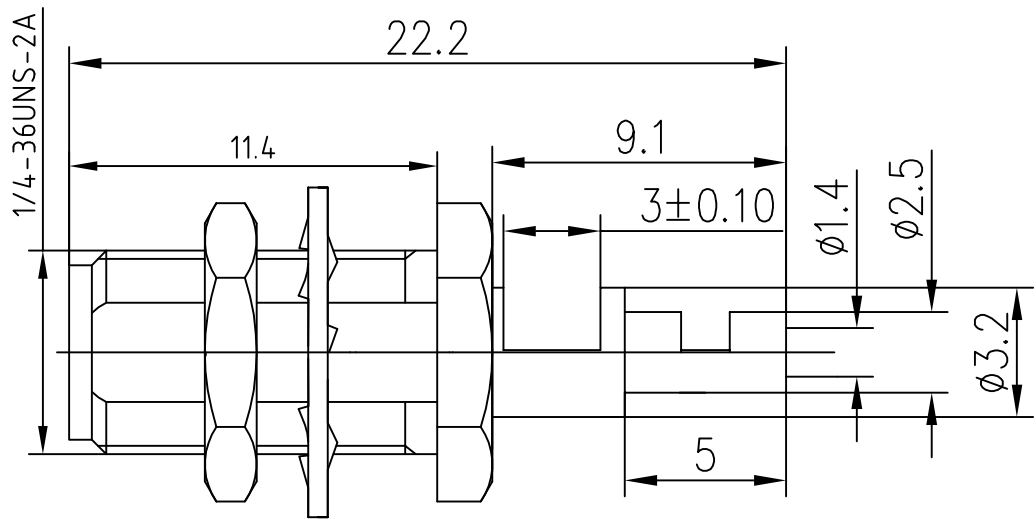
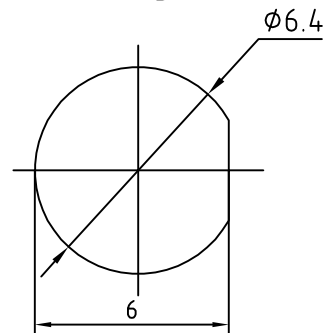


Revision 12-12-17



Mounting hole



Notes:

Electrical characteristics

1. Impedance: 50Ω
2. Working voltage: ≤ 335V
3. Insulation resistance: ≥ 5000MΩ
4. Dielectric strength: 1000V
5. Contact resistance: Center contact ≤ 3MΩ
Outer contact ≤ 2.5MΩ

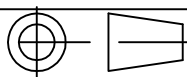
Material & Finish

Inner Contact: gold plated over Beryllium-copper.

Outer Contact: nickel plated over brass.

Insulators: Teflon

D



Scale

1:1

Name Date

Designed Michael Tang 2-Nov-12

Checked Jason Cai 2-Nov-12

Approved Teresa 2-Nov-12

SMA-KY1.13

SMA female Bulkhead conn. for 1.13 cable

UNLESS OTHERWISE SPECIFIED
DIMENSIONS ARE mm, TOLERANCES ARE:
FRACTIONS DECIMALS ANGLES
.X ± .15 ± 1°
.XX ± .05
.XXX ±

Xi'an T-RELY ELECTRONICS CO., LTD.