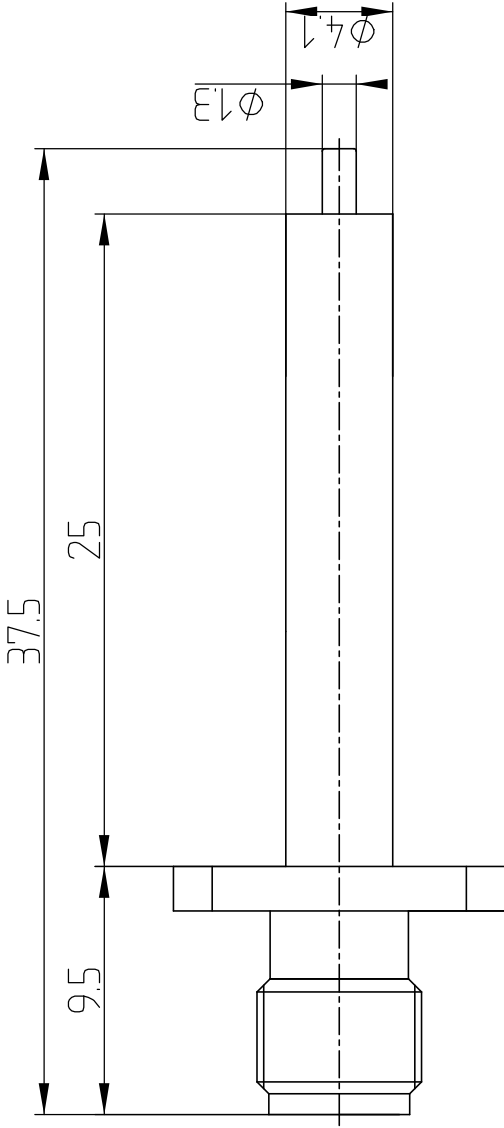
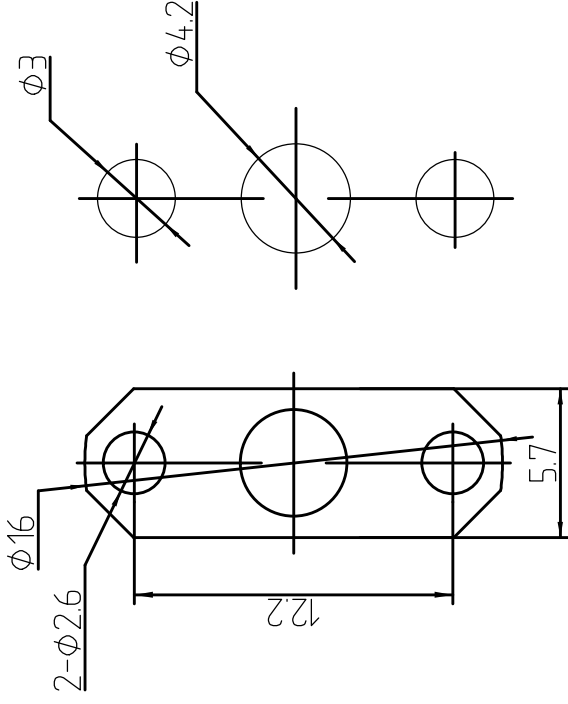


This document contains proprietary information and such information may not be disclosed to others for any purposes, not used for sales/marketing/procurement purposes without written permission



Mounting Hole



1. Electrical
- 1.1 Impedance 50 Ω
 - 1.2 Frequency DC ~6GHz
 - 1.2 Dielectric withstanding voltage 1000V (volts RMS)
 - 1.3 Center contact resistance ≤ 3M Ω
 - 1.4 Outer contact resistance ≤ 2M Ω
 - 1.5 Insulation resistance: ≥ 5000M Ω
 - 1.6 VSWR 1.25:1

2. Environmental & Mechanical
- 2.1 Temperature range -45°C ~ 85°C
 - 2.2 RoHS Compliant
 - 2.3 Durability > 500 cycles

3. Materials & Plating
- 3.1 Body: Brass, Gold plated
 - 3.2 Insulator: Teflon
 - 3.3 Contact Pin: Bronze, Gold plated

Notes:

- 1. ALL SPECIFICATIONS ARE SUBJECT TO CHANGE NOTICE AT ANY TIME
- 2. CUSTOMER OUTLINE DRAWING FOR REFERENCE ONLY

REV	DESCRIPTION OF REVISION	ECN NO.	BY	DATE	APPROVED
A	Initial Release		T. Haiyum	15/09/17	15/09/17

DRAWN: T. Haiyum 15/09/17

ENGINEER: C. Teo 15/09/17

APPROVED: W. Giang 12/07/08

TOLEANCES UNLESS OTHERWISE SPECIFIED
 X ±0.50
 .X ±0.20
 .XX ±0.10
 ANGLES ±1°

TITLE:
RF Coaxial Connector

SMA Female Flange Conn. Terminal

PART NO: SMA-KFD903B



www.trf.com



DIMENSION IN MILLIMETERS (mm)

SCALE: A4 N/A
 SHEET: 1/1
 REV: A