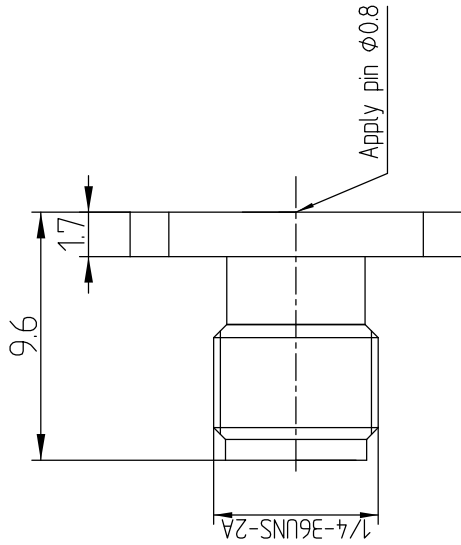


This document contains proprietary information and such information may not be disclosed to others for any purposes, not used for sales/marketing/procurement purposes without written permission



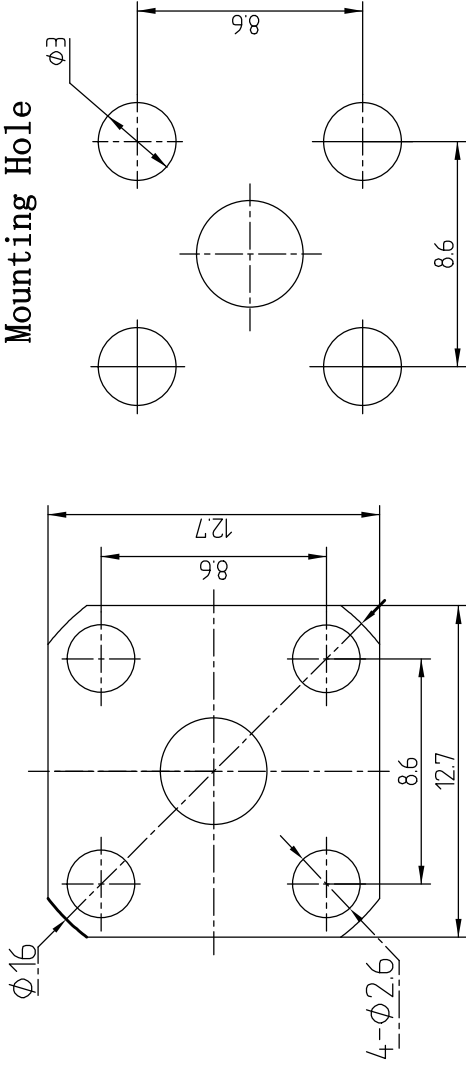
- 1 Electrical
- 1.1 Impedance 50 Ω
  - 1.2 Frequency DC ~18GHz
  - 1.2 Dielectric withstanding voltage 1000V(volts RMS)
  - 1.3 Center contact resistance ≤ 3MΩ
  - 1.4 Outer contact resistance ≤ 2MΩ
  - 1.5 Insulation resistance: ≥5000MΩ
  - 1.6 VSWR 1.25 : 1
- 2 Environmental & Mechanical
- 2.1 Temperature range -45℃ ~125℃
  - 2.2 RoHS Compliant
  - 2.3 Durability >500 cycles

- 3 Materials & Plating
- 3.1 Body: Brass, Gold plated
  - 3.2 Insulator: Teflon
  - 3.3 Contact Pin: Beryllium-copper, Gold plated

**Notes:**

- 1. ALL SPECIFICATIONS ARE SUBJECT TO CHANGE NOTICE AT ANY TIME
- 2. CUSTOMER OUTLINE DRAWING FOR REFERENCE ONLY

**Recommended Mounting Hole**



REV	DESCRIPTION OF REVISION	ECN NO.	BY	DATE	APPROVED
A	Initial Release		T. Haiyun	15/09/17	15/09/17

DRAWN: T. Haiyun 15/09/17		TITLE: RF Coaxial Connector	
ENGINEER: C. Tao 15/09/17		www.rf-connector-china.com	
APPROVED: W. Qiang 12/07/08		SMA Female Flange Conn. for Dia. 0.8 Pin	
TOLERANCES UNLESS OTHERWISE SPECIFIED		DIMENSION IN MILLIMETERS (mm)	
X	+0.50	SCALE: A4	1/1
X	+0.20	SIZE: N/A	REV: A
XX	+0.10		
	ANGLES *°		
PART NO: SMA-KFD0.8G		SHEET: 1/1	