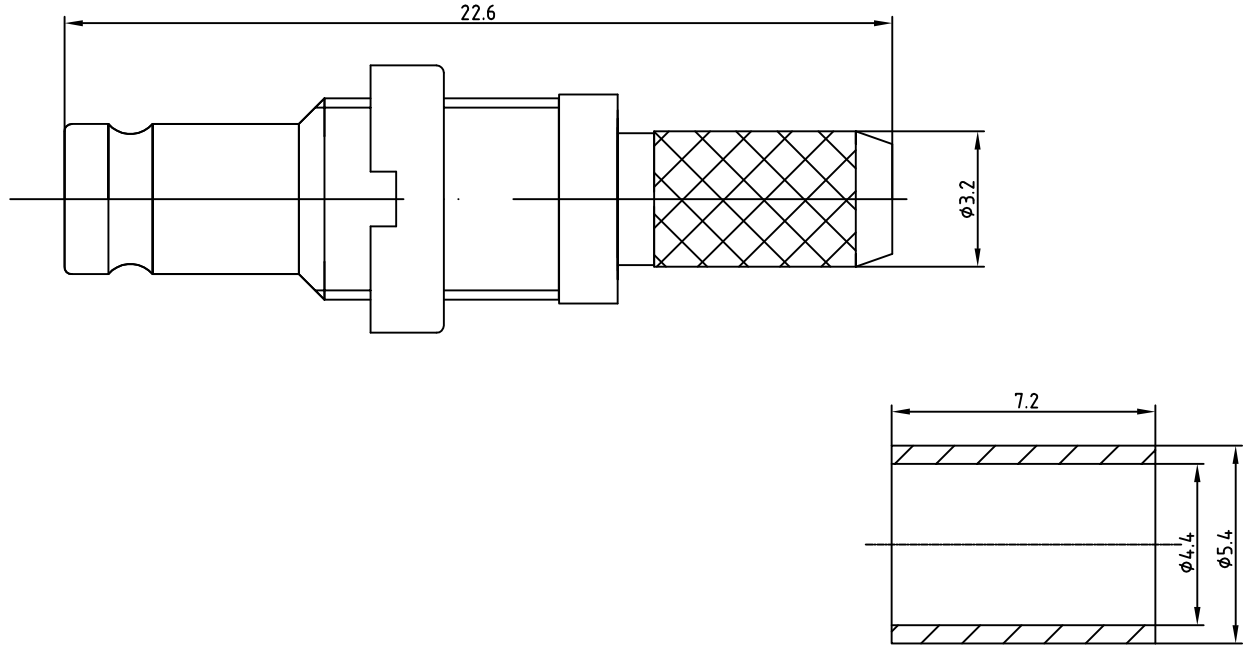


This document contains proprietary information and such information may not be disclosed to others for any purposes, nor used for sales/marketing/procurement purposes without written permission
 本文件包含专有信息，没有书面许可，该信息不能以任何形式披露给第三方，也不能用于任何目的的买卖、销售及采购。



电气指标:

1. 频率范围: DC~1GHz
 2. 接触电阻
内导体: $\leq 10\text{m}\Omega$
外导体: $\leq 7.5\text{m}\Omega$
 3. 绝缘电阻: $\geq 1000\text{M}\Omega$
 4. 介质耐压: 750V(rms)
 5. 使用寿命: 500次
- 执行标准: GB681A(MIL-C-39012)
- 材料&镀层
1. 中心接触件: 铍青铜, 镀金
 2. 外壳: 黄铜, 镀镍
 3. 绝缘子: PTFE

Electrical Characteristics:

1. Frequency range: DC~1GHz
2. Contact resistance
Center conductor: $\leq 10\text{m}\Omega$
Out conductor: $\leq 7.5\text{m}\Omega$
3. Insulation resistance: $\geq 1000\text{M}\Omega$
4. Insulator withstanding: 750V(rms)
5. Durability: 500cycles

Application: GB681A(MIL-C-39012)

Material&Finishing

1. Center contact: Beryllium-copper, gold plated
2. Body :brass, nickel plated
3. Insulators: PTFE

FIRST ANGLE PROJECTION		SCALE	SAA-75KY3Y RF Coaxial Connector	UNITS	UNLESS OTHERWISE SPECIFIED DIMENSIONS ARE mm, TOLERANCES ARE: FRACTIONS DECIMALS ANGLES .X± .20 ±1° .XX± .10 .XXX±
THIRD ANGLE PROJECTION		2:1		mm	
	NAME	DATE	REV		
DRAWN	Tomson Tang	03-03-12	V1.0		
CHECKED	Magi Wang	03-03-12			
APPROVED	Teresa Shen	03-03-12			

Xi'an T-rely Electronics Co.,Ltd.