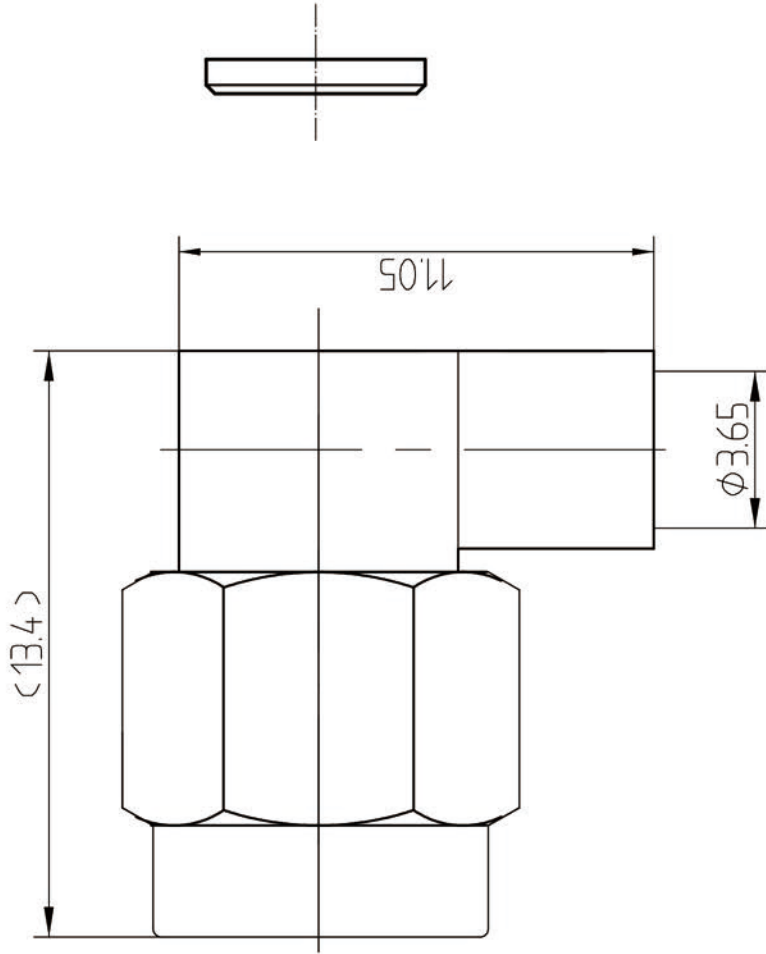


This document contains proprietary information and such information may not be disclosed to others for any purposes, not used for sales/marketing/procurement purposes without written permission

- 1 Electrical
 - 1.1 Impedance 50 Ω
 - 1.2 Frequency DC ~ 18GHz
 - 1.3 VSWR $\leq 1.50:1$
- 2 Environmental & Mechanical
 - 2.1 Temperature range -45 $^{\circ}$ C ~ +85 $^{\circ}$ C
 - 2.2 RoHS Compliant
 - 2.3 Durability >500 cycles
- 3 Materials & plating
 - 3.1 Body: Brass; Gold Plated
 - 3.2 Insulator: Teflon
 - 3.3 Contact Pin: Brass, gold plated
 - 3.4 Nut: Stainless Steel, Passivated
 - 3.5 Gasket: Silicon Rubber



Notes:

- 1. ALL SPECIFICATIONS ARE SUBJECT TO CHANGE NOTICE AT ANY TIME
- 2. CUSTOMER OUTLINE DRAWING FOR REFERENCE ONLY

REV	DESCRIPTION OF REVISION	ECN NO.	BY	DATE	APPROVED
A	Initial Release		T.Haiyum	25/03/07	25/03/07

DRAWN: T. Haiyum 25/03/07 ENGINEER: C. Tao 25/03/07 APPROVED: W. Qiang 25/03/07	TITLE: RF Coaxial Connector SMA Male R/A Conn. for TPLEX 141 Cable	 www.rf-connector-china.com
TOLERANCES UNLESS OTHERWISE SPECIFIED X ±0.50 XX ±0.20 ANGLE ±1°	 DIMENSION IN MILLIMETERS (mm)	SIZE: A4 SCALE: N/A SHEET: 1/1 REV: A