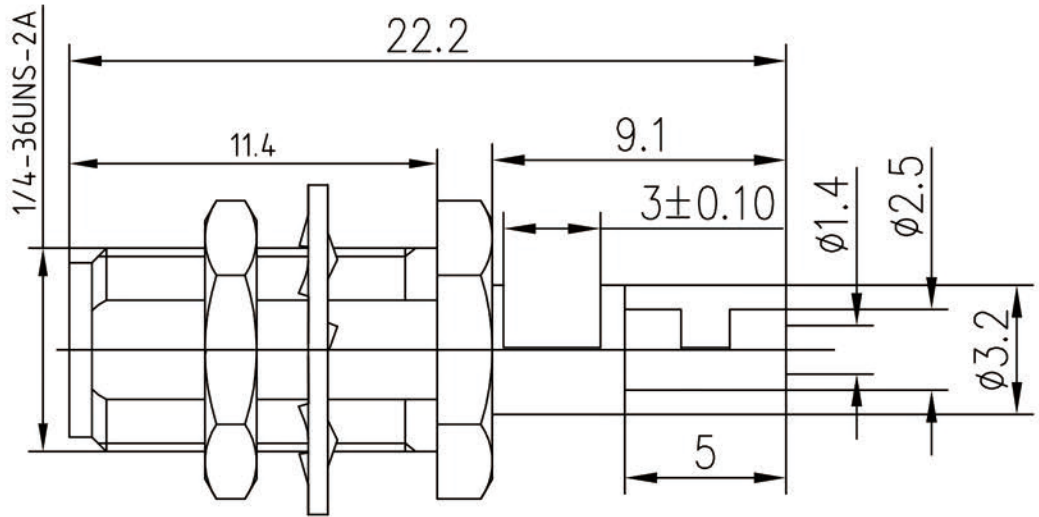
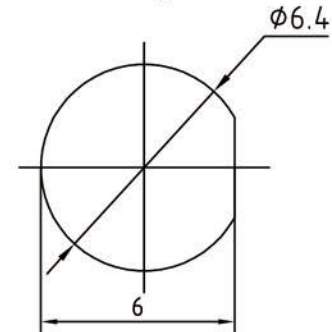


Revision 12-12-17



Mounting hole



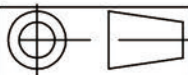
Notes:

Electrical characteristics

1. Impedance: 50Ω
2. Working voltage: ≤335V
3. Insulation resistance: ≥5000MΩ
4. Dielectric strength: 1000V
5. Contact resistance: Center contact ≤ 3MΩ
Outer contact ≤ 2.5MΩ

Material & Finish

Inner Contact: gold plated over Beryllium-copper.
Outer Contact: nickel plated over brass.
Insulators: Teflon



Scale

1:1

Name

Date

Designed

Michael Tang 2-Nov-12

Checked

Jason Cai 2-Nov-12

Approved

Teresa 2-Nov-12

SMA-KY1.13

SMA female Bulkhead conn. for 1.13 cable

UNLESS OTHERWISE SPECIFIED
DIMENSIONS ARE mm, TOLERANCES ARE:
FRACTIONS DECIMALS ANGLES
.X± .15 ±1°
.XX± .05
.XXX±



www.rf-connector-china.com