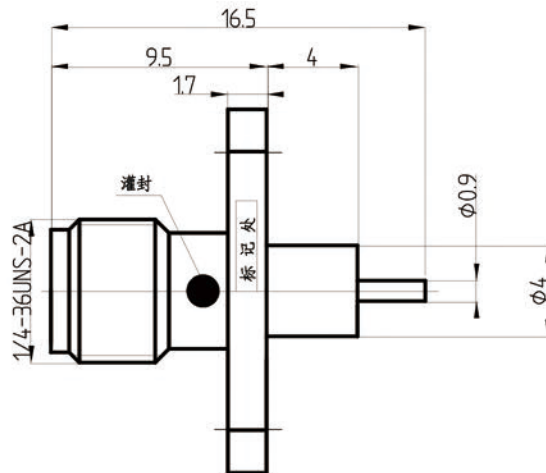
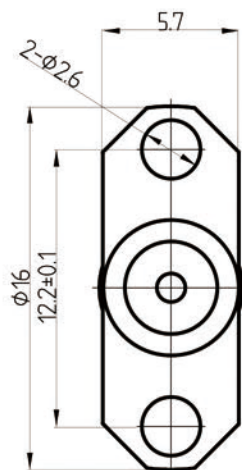


This document contains proprietary information and such information may not be disclosed to others for any purposes, not used for sales/marketing/procurement purposes without written permission

| REV | DESCRIPTION OF REVISION | ECN NO. | BY      | DATE     | APPROVED |
|-----|-------------------------|---------|---------|----------|----------|
| A   | Initial Release         | —       | T.Hayun | 07/04/16 | 07/04/16 |



## 1 电气性能

- 1.1 特性阻抗 50 Ω
- 1.2 频率 DC ~6GHz
- 1.3 介质耐压 1000V
- 1.4 中心导体电阻 < 3M Ω
- 1.5 外导体电阻 < 2M Ω
- 1.6 绝缘电阻 ≥5000M Ω
- 1.7 VSWR <1.2

## 2 材料及涂覆

- 2.1 外壳: 黄铜, 镀金
- 2.2 绝缘子: teflon
- 2.3 内导体: 锡青铜, 镀金

### Notes:

1.ALL SPECIFICATIONS ARE SUBJECT TO CHANGE NOTICE AT ANY TIME

2.CUSTOMER OUTLINE DRAWING FOR REFERENCE ONLY

|                                       |
|---------------------------------------|
| DRAWN: T.Hayun 07/04/16               |
| ENGINEER: C.Tao 07/04/16              |
| APPROVED: W.Diang 07/04/16            |
| TOLERANCES UNLESS OTHERWISE SPECIFIED |
| X ±0.50                               |
| XX ±0.20                              |
| XXX ±0.10                             |
| ANGLES °P                             |

|        |                                   |
|--------|-----------------------------------|
| TITLE: | RF Coaxial Connector              |
|        | SMA Female Flange Connector Mount |



www.rf-connector-china.com



DIMENSION IN MILLIMETERS (mm)

PART NO: SMA-KFD1011

SIZE: A4

SCALE: N/A

SHEET: 1/1

REV: A