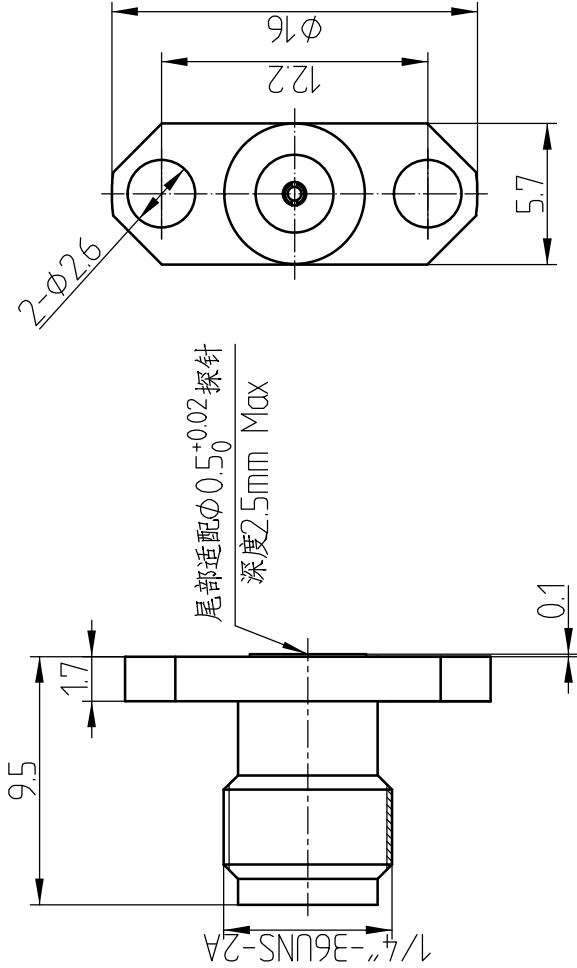


This document contains proprietary information and such information may not be disclosed to others for any purposes, not used for sales/marketing/procurement purposes without written permission



- 1 Electrical
 - 1.1 Impedence 50 Ω
 - 1.2 Frequency DC ~ 18GHz
 - 1.3 Dielectric withstanding voltage 1000V (volts RMS)
 - 1.4 Center contact resistance $\leq 3M\Omega$
 - 1.5 Outer contact resistance $\leq 2M\Omega$
 - 1.6 Insulation resistance: $\geq 5000M\Omega$
 - 1.7 VSWR 1.25 : 1

- 2 Environmental & Mechanical
 - 2.1 Temperature range -45 °C ~ 125 °C
 - 2.2 RoHS Compliant
 - 2.3 Durability > 500 cycles

- 3 Materials & Plating
 - 3.1 Body: Brass, Gold plated
 - 3.2 Insulator: Teflon
 - 3.3 Contact Pin: Beryllium-copper, Gold plated

REV	DESCRIPTION OF REVISION	ECN NO.	BY	DATE	APPROVED
A	Initial Release		T. Haiyun	15/09/17	15/09/17

Notes:

1. ALL SPECIFICATIONS ARE SUBJECT TO CHANGE NOTICE AT ANY TIME
2. CUSTOMER OUTLINE DRAWING FOR REFERENCE ONLY

DRAWN: T. Haiyun 15/09/17
ENGINEER: C. Tao 15/09/17
APPROVED: W. Qiang 12/07/08
TOLERANCES UNLESS OTHERWISE SPECIFIED
X ±0.50
X ±0.20
XX ±0.10
ANGLES °

TITLE:	
RF Coaxial Connector	
SMA Female Flange Conn. Terminal	
PART NO:	SMA-KFD0.5



DIMENSION IN MILLIMETERS (mm)

SCALE:	N/A	SHEET:	1/1	REV:	A
SIZE:	A4				