

This document contains proprietary information and such information may not be disclosed to others for any purposes, not used for sales/marketing/procurement purposes without written permission

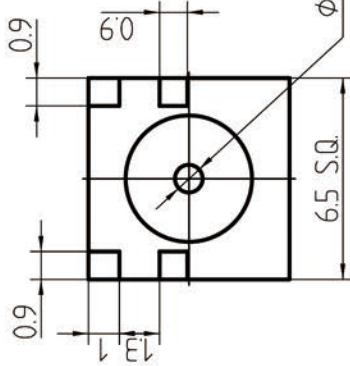
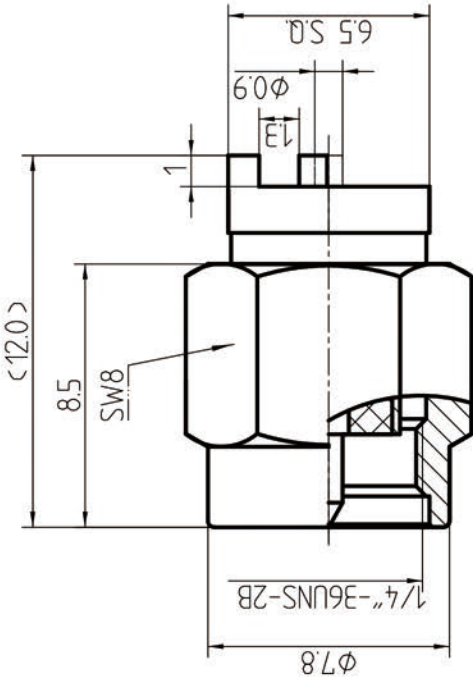
- 1 Electrical
 - 1.1 Impedence 50 Ω
 - 1.2 Frequency DC ~6GHz
 - 1.3 Dielectric withstanding voltage 1000V(volts RMS)
 - 1.4 Center contact resistance $\leq 3M\Omega$
 - 1.5 Outer contact resistance $\leq 2M\Omega$
 - 1.6 Insulation resistance: $\geq 5000M\Omega$

- 2 Environmental&Mechanical

- 2.1 Temperature range -40 $^{\circ}$ C ~+85 $^{\circ}$ C
- 2.2 RoHS Compliant
- 2.3 Durability >500 cycles

- 3 Materials&plating

- 3.1 Body: Brass; gold plated
- 3.2 Insulator: Teflon
- 3.3 Contact Pin: Brass, gold plated
- 3.4 Nut: Brass, gold Plated
- 3.5 Gasket: Silicon Rubber (red color)
- 3.6 Meet with 24h Salt spray



REV	DESCRIPTION OF REVISION	ECN NO.	BY	DATE	APPROVED
A	Initial Release		T. Haiyun	23/5/14	23/5/14

Notes:

1. ALL SPECIFICATIONS ARE SUBJECT TO CHANGE NOTICE AT ANY TIME
2. CUSTOMER OUTLINE DRAWING FOR REFERENCE ONLY

DRAWN : T. Haiyun 23/5/14

ENGINEER: C. Tao 23/5/14

APPROVED : W. Qiang 23/5/14

TOLERANCES UNLESS OTHERWISE SPECIFIED
 X +0.50
 XX +0.20
 ANGLES *°

TITLE:

RF Coaxial Connector

SMA Male Conn. for PCB

PART NO: SMA-JHDC2T



www.rf-connector-china.com



DIMENSION IN MILLIMETERS (mm)

SIZE: A4 SCALE: N/A SHEET: 1/1 REF: A