

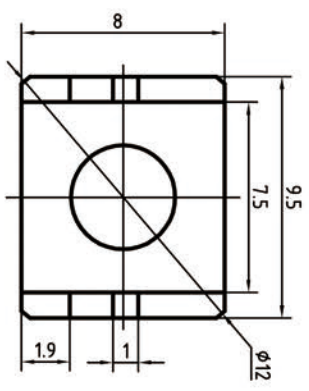
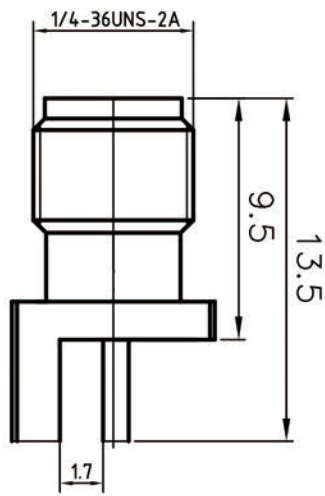
This document contains proprietary information and such information may not be disclosed to others for any purposes, not used for sales/marketing/procurement purposes without written permission

REV	DESCRIPTION OF REVISION	EON NO.	BY	DATE	APPROVED
A	Initial Release		T.Holjyun	24/7/13	24/7/13

- 1 Electrical
 - 1.1 Impedence 50Ω
 - 1.2 Frequency 0~10GHz
 - 1.2 Dielectric withstanding voltage 1000V(volts RMS)
 - 1.3 Center contact resistance ≤ 3MΩ
 - 1.4 Outer contact resistance ≤ 2MΩ
 - 1.5 Insulation resistance: ≥5000MΩ


- 2 Environmental&Mechanical
 - 2.1 Temperature range -55℃~155℃
 - 2.2 Rohs Compliant
 - 2.3 Durability >500 cycles

- 3 Materials&plating
 - 3.1 Body: Brass; Gold, plated
 - 3.2 Insulator: Teflon
 - 3.3 Contact Pin: Beryllium Copper; Gold,plated



Notes:

1. ALL SPECIFICATIONS ARE SUBJECT TO CHANGE NOTICE AT ANY TIME
2. CUSTOMER OUTLINE DRAWING FOR REFERENCE ONLY

DRAWN: T.Holjyun 24/07/13		TITLE: SMA-KHDC5	
ENGINEER: C.Too 24/07/13		SMA Female Conn. End Launch	
APPROVED: W.Qiang 24/07/13		PART NO: TRL-SMAF-5129	
TOLERANCES UNLESS OTHERWISE SPECIFIED		 www.rf-connector-china.com	
X	±0.20	SIZE: A4	DIMENSION IN MILLIMETERS (mm)
XX	±0.10	SCALE: 1:1	SHEET: 1/1
ANGLES	30°	REV: A	