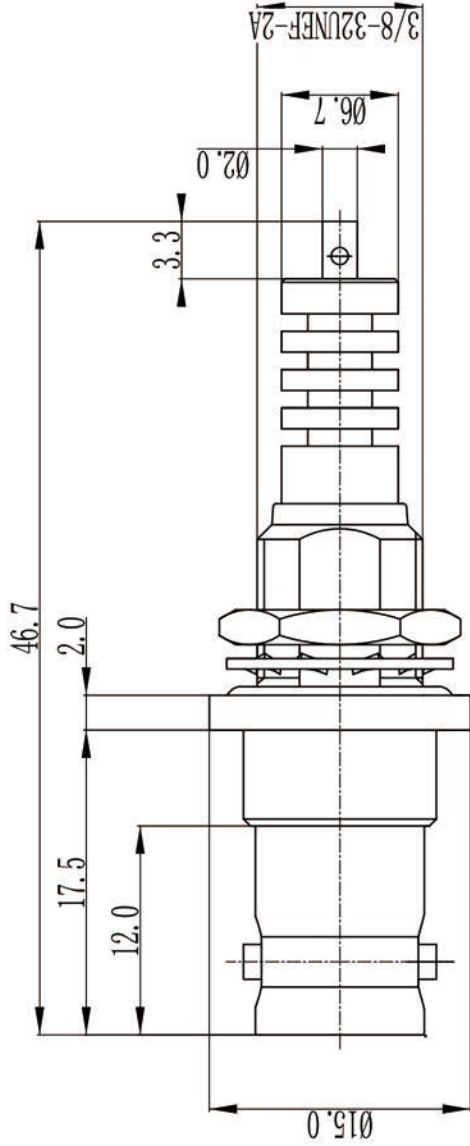
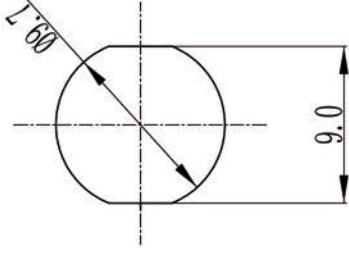


This document contains proprietary information and such information may not be disclosed to others for any purposes, not used for sales/marketing/procurement purposes without written permission

REV	DESCRIPTION OF REVISION	ECN NO.	BY	DATE	APPROVED
A	Initial Release		T. Shihua	18/02/14	18/02/14



Mounting Hole



1 Electrical

1.1 Frequency: 0-0.3GHz

2 Mechanical

2.1 Center contact: solder

3 Environmental

3.1 Operating temperature -65° to 165°

3.2 RoHS compliant

4 Material&Finish

4.1 Inner Contact: brass, gold plated

4.2 Outer Contact: nickel, gold plated

4.3 Insulators: PTFE

Notes:

1. ALL SPECIFICATIONS ARE SUBJECT TO CHANGE NOTICE AT ANY TIME
2. CUSTOMER OUTLINE DRAWING FOR REFERENCE ONLY

DRAWN : T. Shihua 18/02/14

ENGINEER: C. Tao 18/02/14

APPROVED : W. Qiang 18/02/14

TOLERANCES UNLESS OTHERWISE SPECIFIED
 X +0.50
 XX +0.20
 ANGLES ±°

TITLE:

High Voltage RF Connector
 SHV Female Bulkhead Connector For Terminal

PART NO: SHV-JYD3



www.rf-connector-china.com



DIMENSION IN MILLIMETERS (mm)

SIZE: A4 SCALE: N/A SHEET: 1/1 RFI: A