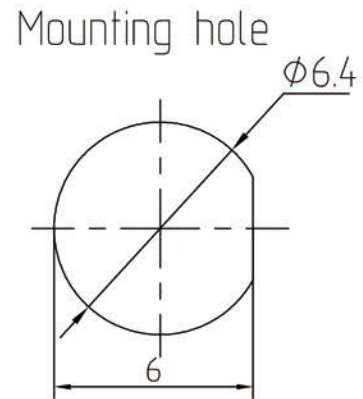
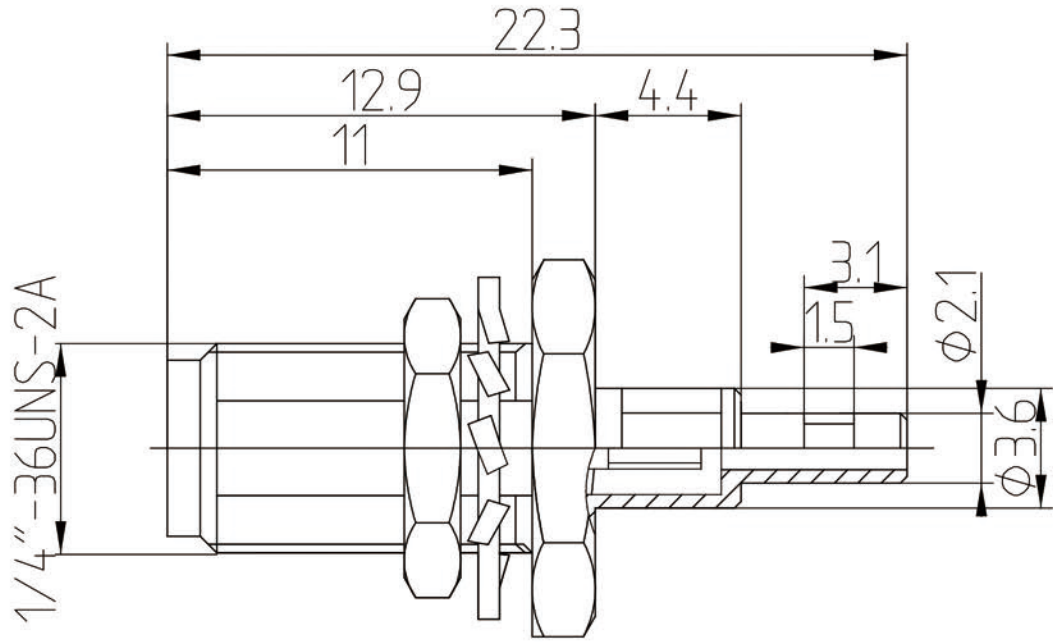


Revision 12-12-17

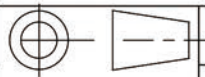


Notes:

Electrical characteristics

1. Impedance: 50Ω
2. Working voltage: $\leq 335V$
3. Insulation resistance: $\geq 5000M \Omega$
4. Dielectric strength: $1000V$
5. Contact resistance: Center contact $\leq 3M \Omega$

Material & Finish Outer contact
 $\leq 25M \Omega$
 Inner Contact: gold plated over Beryllium-copper.
 Outer Contact: nickel plated over brass.
 Insulators: Teflon



Scale

1:1

Name

Date

Designed

Michael Tang

2-Nov-12

Checked

Jason Cai

2-Nov-12

Approved

Teresa

2-Nov-12

SMA-KY1.13B

SMA female Bulkhead conn. for 1.13 cable

UNLESS OTHERWISE SPECIFIED
 DIMENSIONS ARE mm, TOLERANCES ARE:
 FRACTIONS DECIMALS ANGLES
 .X± .15 ±1°
 .XX± .05
 .XXX±



www.rf-connector-china.com