

This document contains proprietary information and such information may not be disclosed to others for any purposes, not used for sales/marketing/procurement purposes without written permission

REV	DESCRIPTION OF REVISION	ECN NO.	BY	DATE	APPROVED
A	Initial Release	---	T.Shihua	16/6/15	16/6/15

1 Electrical data

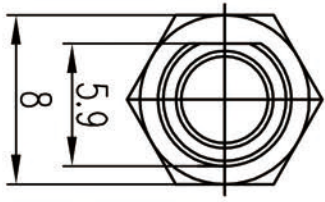
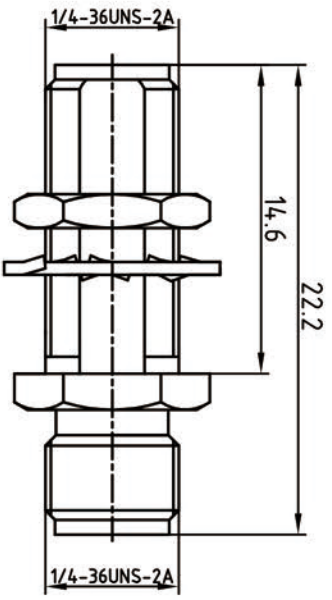
- 1.1 Impedance: 50Ω
- 1.2 Frequency: DC-6GHz
- 1.3 VSWR 1.2:1


2 Mechanical data

- 2.1 Temperature range -45°C ~+85°C
- 2.2 Durability(matings) >500

3 Material&Finish

- 3.1 Pin contact: Beryllium-copper, gold plated
- 3.2 Body: Brass gold plated
- 3.3 Insulators: PTFE



DRAWN: T.Shihua 16/6/15		TITLE: RF Adaptor		 www.rf-connector-china.com
ENGINEER: C.Too 16/6/15		SMA Female to Female Bulkhead Adaptor		
APPROVED: W.Qiang 16/6/15		PART NO: SMA-KYKA		SIZE: A4
TOLERANCES UNLESS OTHERWISE SPECIFIED				SCALE: N/A
X	±0.20			SHEET: 1/1
X	±0.30			REV: A
XX	±0.10			
ANGLES 30°				

Notes:
 1. ALL SPECIFICATIONS ARE SUBJECT TO CHANGE NOTICE AT ANY TIME
 2. CUSTOMER OUTLINE DRAWING FOR REFERENCE ONLY