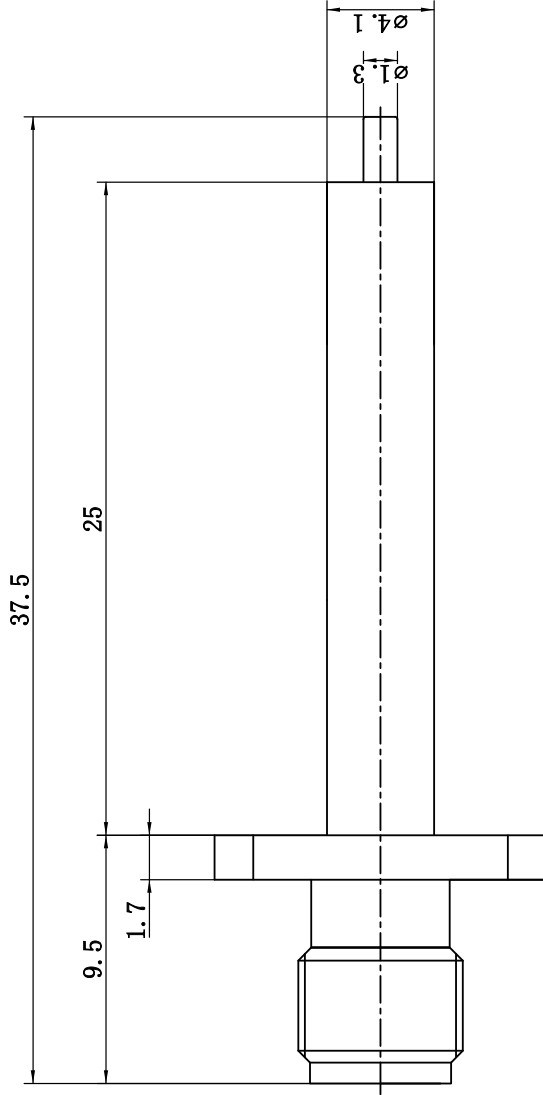


This document contains proprietary information and such information may not be disclosed to others for any purposes, not used for sales/marketing/procurement purposes without written permission

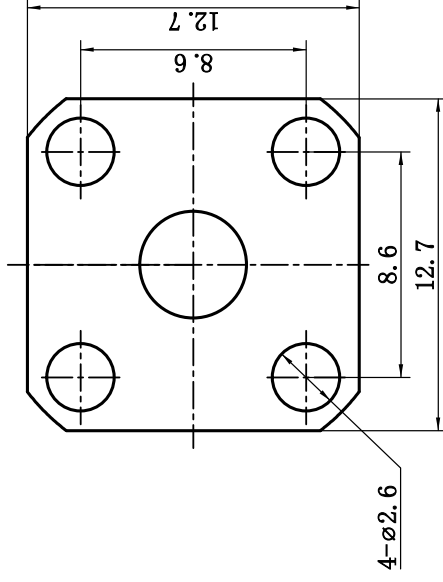


- 1 Electrical**
- 1.1 Impedance 50 Ω
  - 1.2 Frequency DC~6GHz
  - 1.3 Dielectric withstanding voltage 1000V(volts RMS)
  - 1.4 Center contact resistance ≤ 3M Ω
  - 1.5 Outer contact resistance ≤ 2M Ω
  - 1.6 Insulation resistance: ≥5000M Ω
  - 1.7 VSWR 1.20:1
- 2 Environmental&Mechanical**
- 2.1 Temperature range -45℃~125℃
  - 2.2 RoHS Compliant
  - 2.3 Durability >500 cycles
- 3 Materials&plating**
- 3.1 Body: Brass, Gold plated
  - 3.2 Insulator: Teflon
  - 3.3 Contact Pin: Beryllium-Copper, Gold plated

Notes:

- 1. ALL SPECIFICATIONS ARE SUBJECT TO CHANGE NOTICE AT ANY TIME
- 2. CUSTOMER OUTLINE DRAWING FOR REFERENCE ONLY

REV	DESCRIPTION OF REVISION	ECN NO.	BY	DATE	APPROVED
A	Initial Release		T. Haiyum	15/09/17	15/09/17



DRAWN :	T. Haiyum 15/09/17
ENGINEER:	C. Tao 15/09/17
APPROVED :	W. Qiang 12/07/08
TOLERANCES UNLESS OTHERWISE SPECIFIED	
X	±0.50
.X	±0.20
.XX	±0.10
ANGLES	±1°

TITLE:		RF Coaxial Connector	
SMA Female	F Flange	Comm.	Terminal
PART NO:	SMA-KFD903A	SCALE:	N/A
SIZE:	A4	SHEET:	1/1
REV:	A	DIMENSION IN MILLIMETERS (mm)	
wwwf-conncor-china.com		wwwf-conncor-china.com	



wwwf-conncor-china.com

wwwf-conncor-china.com