

1

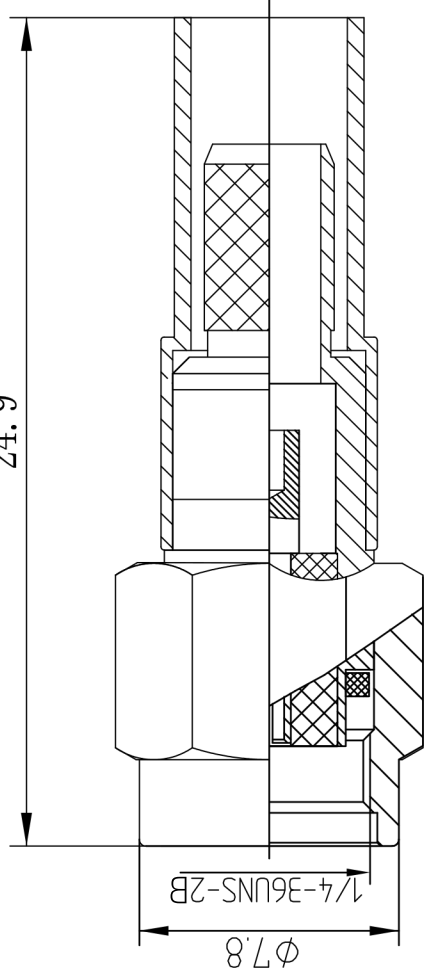
2

3

4

A

24.9



B

1 Electrical

- 1.1 Impedance: 50Ω
- 1.2 Working voltage: $\leq 335V$
- 1.3 Insulation resistance: $\geq 5000M \Omega$
- 1.4 Dielectric strength: $1000V$
- 1.5 Contact resistance
 - Center contact $\leq 3M \Omega$
 - Outer contact $\leq 2.5M \Omega$

C

2 Material&Finish

- 2.1 Inner Contact: gold plated over Bronze
- 2.2 Outer Contact: gold plated over brass.
- 2.3 Insulators: Teflon
- 2.4 Coupling nut: Brass, gold plated



Scale

1:1

Designed

Tomson Tang 24-Oct-08

Checked

Jason Cai 24-Oct-08

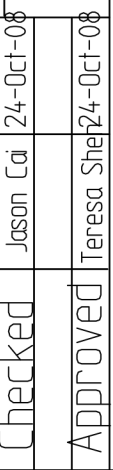
Approved

Teresa Shef 24-Oct-08

UNLESS OTHERWISE SPECIFIED
DIMENSIONS ARE mm; TOLERANCES ARE:
FRACTIONS DECIMALS ANGLES
.X* .15 ±1°
.XX* .05
.XXX*

RPSMA-K5C

RPSMA male for RG58 Cable


www.rf-connector-china.com

A

B

C

D