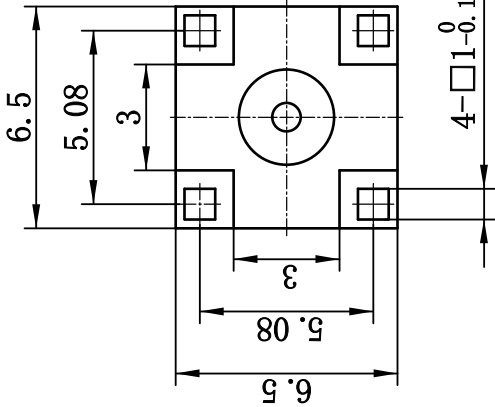
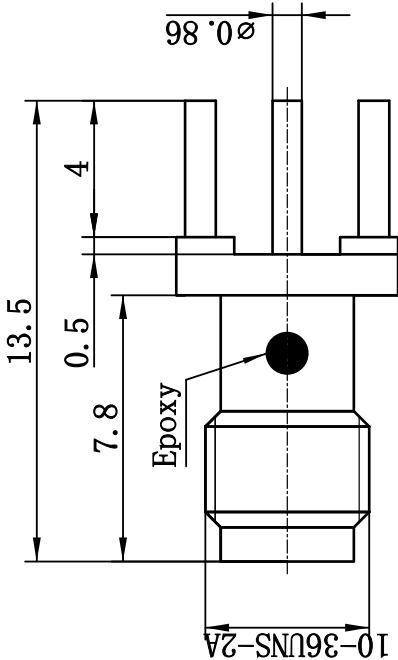
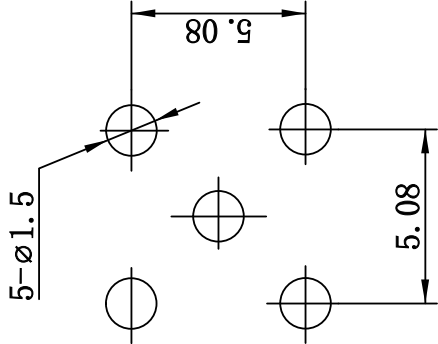


This document contains proprietary information and such information may not be disclosed to others for any purposes, not used for sales/marketing/procurement purposes without written permission



Recommended Mounting Hole



1 Electrical

- 1.1 Impedance 50  $\Omega$
- 1.2 Frequency DC~18GHz
- 1.3 VSWR  $\leq 1.25 @ 6\text{GHz}$

2 Environmental&Mechanical

- 2.1 Temperature range -40°C~+125°C
- 2.2 RoHs Compliant
- 2.3 Durability >500 cycles

3 Materials&plating

- 3.1 Body: Brass; Gold plated
- 3.2 Insulator: Teflon
- 3.3 Contact Pin: Beryllium-copper, Gold plated

Notes:

- 1. ALL SPECIFICATIONS ARE SUBJECT TO CHANGE NOTICE AT ANY TIME
- 2. CUSTOMER OUTLINE DRAWING FOR REFERENCE ONLY

| REV | DESCRIPTION OF REVISION | ECN NO. | BY         | DATE    | APPROVED |
|-----|-------------------------|---------|------------|---------|----------|
| A   | Initial Release         |         | T. Haiyuan | 19/7/16 | 19/7/16  |

|                                       |  |                           |  |
|---------------------------------------|--|---------------------------|--|
| DATE : T. Haiyuan 19/7/16             |  | DATE : T. Haiyuan 19/7/16 |  |
| DRAWN : C. Tao 19/7/16                |  | DATE : T. Haiyuan 19/7/16 |  |
| APPROVED : W. Qiang 19/7/16           |  | DATE : T. Haiyuan 19/7/16 |  |
| TOLERANCES UNLESS OTHERWISE SPECIFIED |  | DATE : T. Haiyuan 19/7/16 |  |
| X $\pm 0.50$                          |  | DATE : T. Haiyuan 19/7/16 |  |
| .X $\pm 0.20$                         |  | DATE : T. Haiyuan 19/7/16 |  |
| .XX $\pm 0.10$                        |  | DATE : T. Haiyuan 19/7/16 |  |
| ANGLES $\pm 1^\circ$                  |  | DATE : T. Haiyuan 19/7/16 |  |



www.qrl.com



DIMENSION IN MILLIMETERS (mm)

SSMA-KHD-1

A