

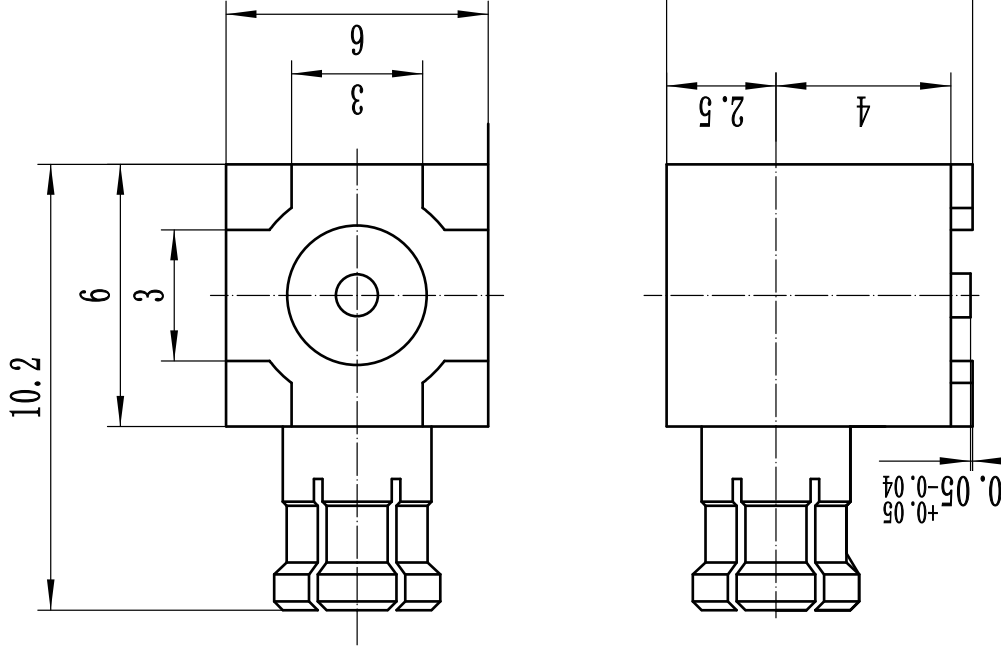
This document contains proprietary information and such information may not be disclosed to others for any purposes, not used for sales/marketing/procurement purposes without written permission

1 Electrical

- 1.1 Impedance: $50\ \Omega$
- 1.2 Frequency: DC~6.0GHz
- 1.3 VSWR: ≤ 1.30
- 1.4 Insulation resistance: $\geq 1000M\ \Omega$
- 1.5 Dielectric strength: 750V
- 1.6 Contact resistance
 - Center contact $\leq 5.0M\ \Omega$
 - Outer contact $\leq 2.5M\ \Omega$

2 Materials&Finish

- 2.1 Inner Contact: Brass, Gold plated
- 2.2 Outer Contact: Beryllium copper, Gold plated
- 2.3 Insulators: PTFE



Notes:

- 1. ALL SPECIFICATIONS ARE SUBJECT TO CHANGE NOTICE AT ANY TIME
- 2. CUSTOMER OUTLINE DRAWING FOR REFERENCE ONLY

REV	DESCRIPTION OF REVISION	TEL NO.	BY	DATE	APPROVED
A	Initial Release		T. Shihua	28/03/2022	28/03/2022

DRAWN: T. Shihua 28/03/2022		TITLE	
ENGINEER: C. Tao 28/03/2022	RF Coaxial Connector		
APPROVED: W. Qiang 28/03/2022	MCX Male R/A for SMD, SMT		
TOLERANCES UNLESS OTHERWISE SPECIFIED	DIMENSION IN MILLIMETERS (mm)		
X ±0.50	SIZE: A4		
.X ±0.20	SCALE: 6:1		
.XX ±0.10	SHEET: 1/1		
ANGLES ±1°	REV: VA		
PART NO: MCX-JWDT	www.fc-connetc.com		