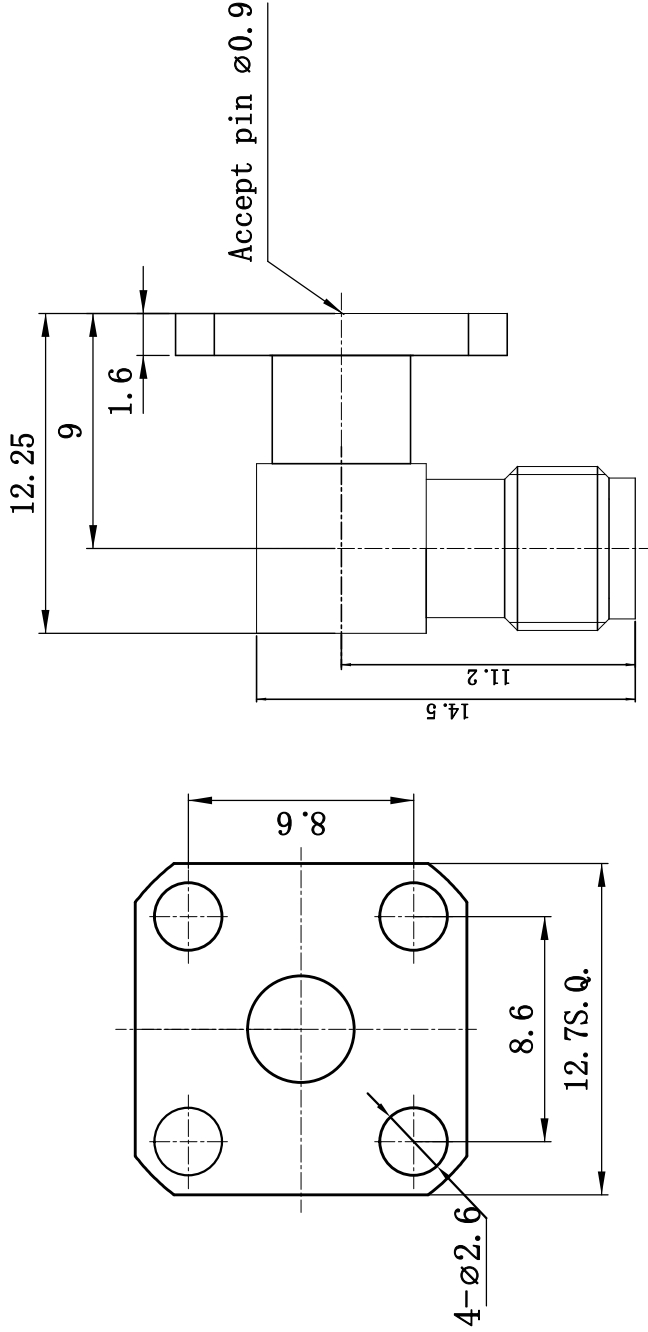


This document contains proprietary information and such information may not be disclosed to others for any purposes, not used for sales/marketing/promocurement purposes without written permission



- 1. Electrical**
- 1.1 Impedance: 50 Ω
  - 1.2 Frequency: DC~18GHz
  - 1.3 VSWR: ≤1.20@6GHz
  - 1.4 Insulation resistance: ≥5000MΩ
  - 1.5 Dielectric strength: 1000V
  - 1.6 Center contact ≤ 3.0mΩ
  - 1.7 Outer contact ≤ 2.0mΩ
- 2. Environmental&Mechanical**
- 2.1 Temperature range: -55℃~+125℃
  - 2.2 RoHS Compliant
  - 2.3 Durability: >500 cycles
- 3. Materials&Finish**
- 3.1 Body: Brass, Gold plated
  - 3.2 Insulator: Teflon
  - 3.3 Contact Pin: Beryllium-Copper, Gold plated

REV	DESCRIPTION OF REVISION	ECN NO.	BY	DATE	APPROVED
A	Initial Release		T. Haiyun	12/7/08	12/7/08

**Notes:**

- 1. ALL SPECIFICATIONS ARE SUBJECT TO CHANGE NOTICE AT ANY TIME
- 2. CUSTOMER OUTLINE DRAWING FOR REFERENCE ONLY

DRAWN: T. Haiyun 12/07/08

ENGINEER: C. Tao 12/07/08

APPROVED: W. Qiang 12/07/08

TOLERANCES UNLESS OTHERWISE SPECIFIED

X ±0.50

.X ±0.20

.XX ±0.10

ANGLES ±1°

**TITLE:**  
RF Coaxial Connector

SMA Female Right Angle Flange  
Conn. Apply for Pin Dia 0.9

PART NO: SMA-KWFD0.9A



www.rf-connector-china.com



DIMENSION IN MILLIMETERS (mm)

SCALE: N/A

SHEET: 1/1

REV: A